

SPARE PART CATALOG

F5

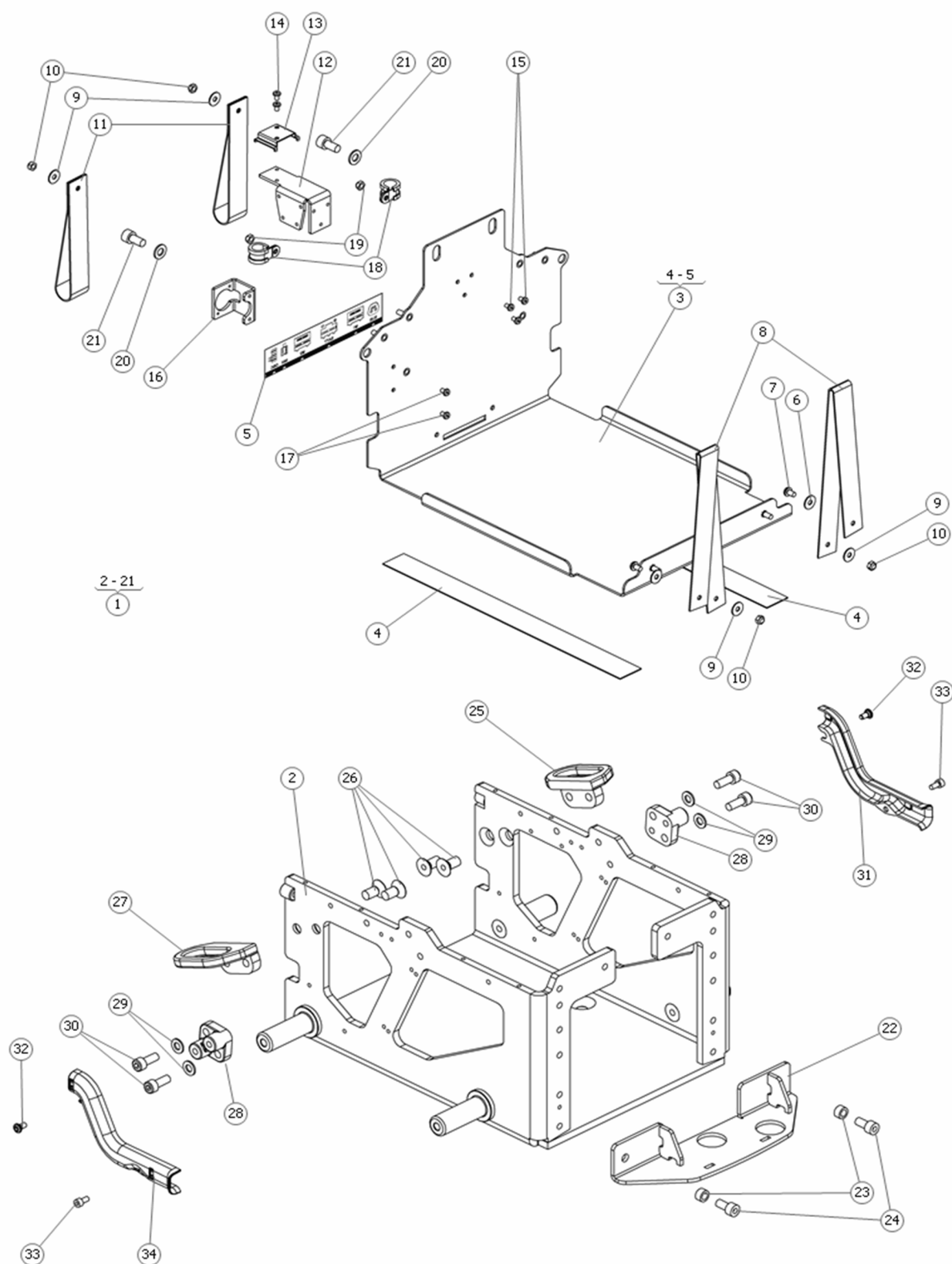
Permobil power wheelchair

permobil

Contents

Chassis.....	
Support wheels.....	
Driving unit and suspension front left	
Wheel suspension rear left.....	
Driving unit and suspension front right	
Wheel suspension rear right.....	
Wheels.....	
Seat elevator AP-lift.....	
Covers	
Electronics R-net	
Lights.....	
Ordering Information.....	
Contact info.	

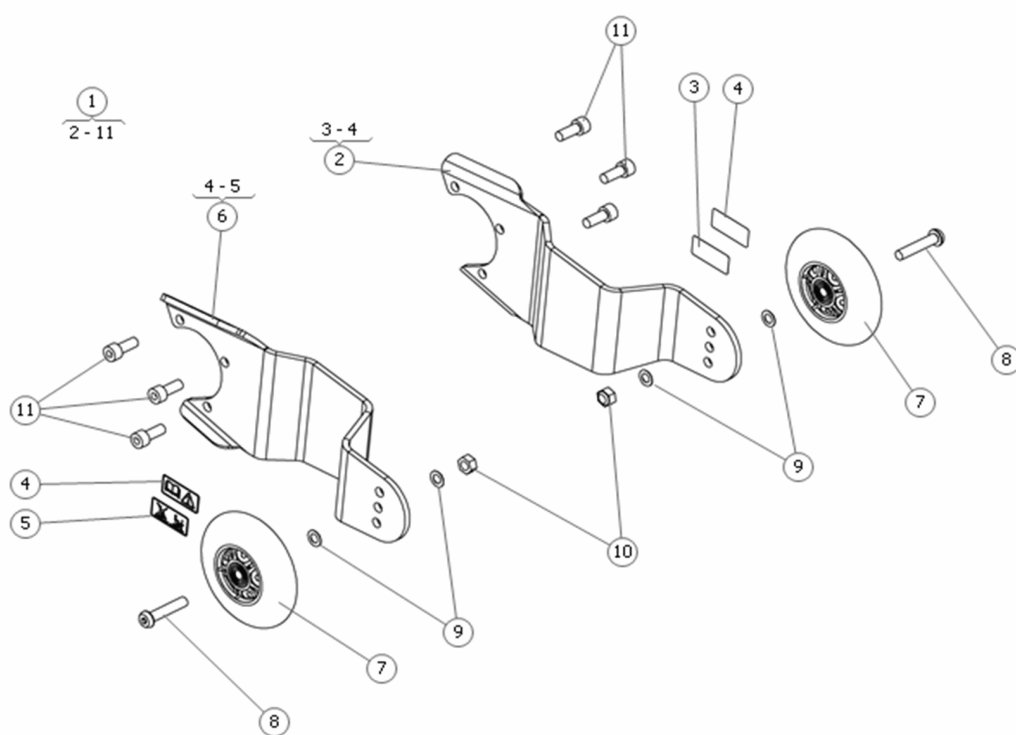
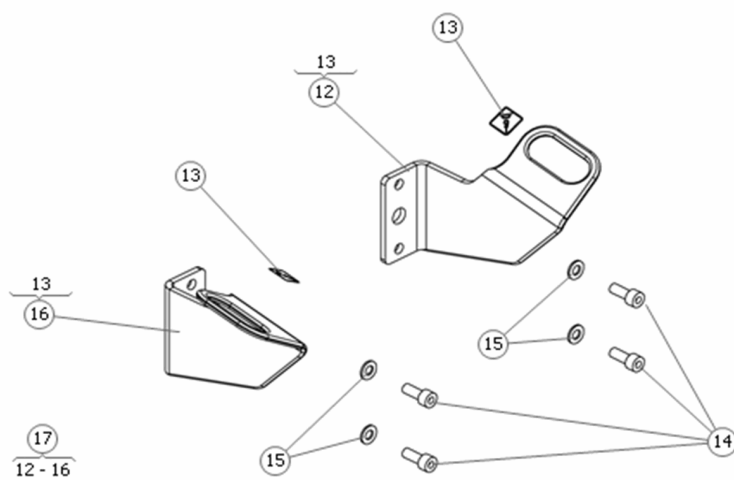
Produced and published by Permobil AB, Sweden
Release date 2015-03-01
PAB: 1290-1



Spare Part F5

Chassis

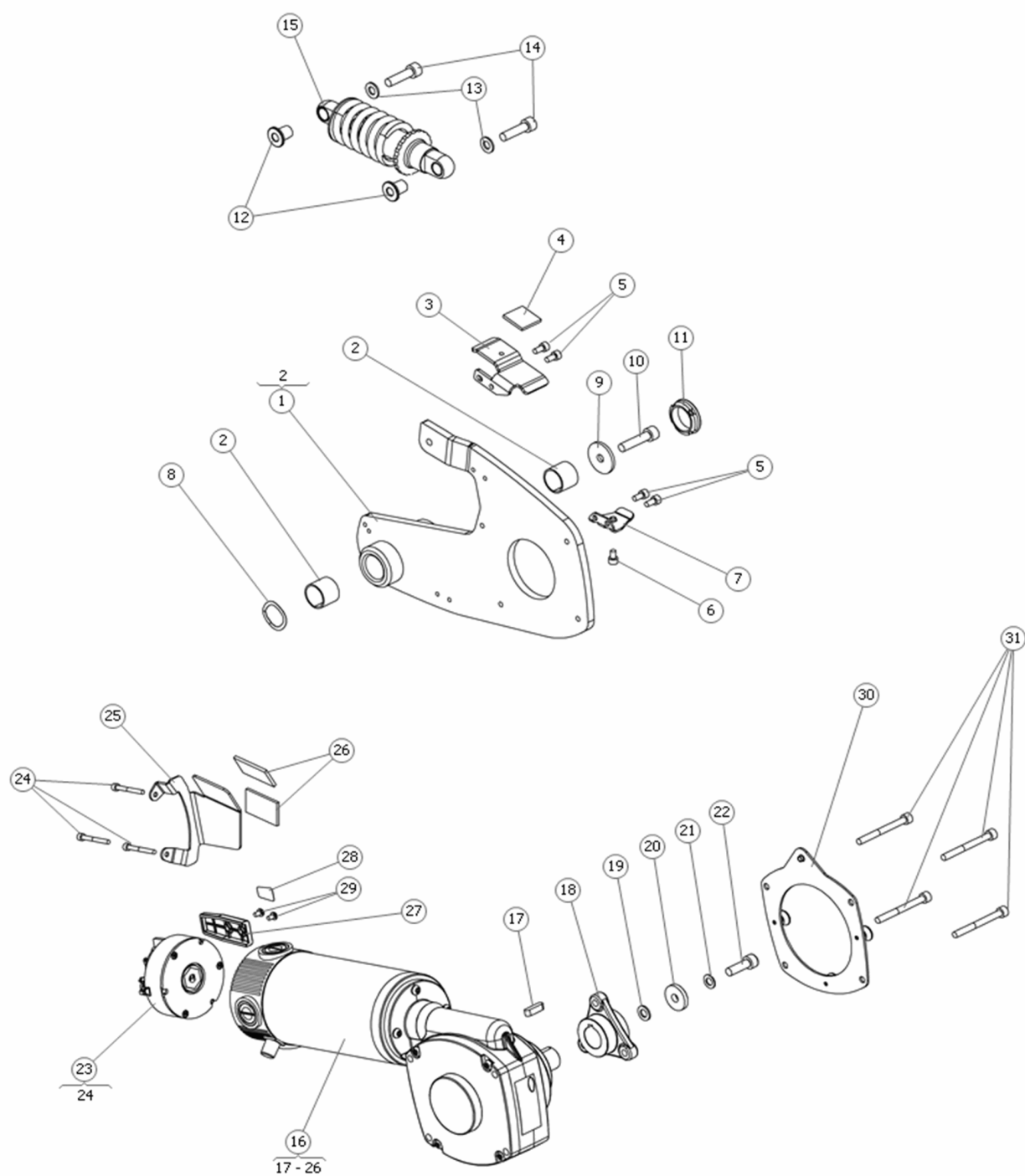
Pos	Qty	Stock Code	Description	Remark
1	1		CHASSI BOX	
2	1	1830710	CHASSIS BOX, F3 F5	
3	1		BATTERY BOX	
4	1		SLIDE TAPE L=340	
5	1	1831392	DECAL, POWER CONNECTIONS	
6	1	612857-99-0	WASHER ISO 7093-1 5 200	
7	1	1830763	BUTTON HEAD SCREW M5x8	
8	1	1830716	STRAP BATTERY SLED STOP	
9	1	612857-99-0	WASHER ISO 7093-1 5 200	
10	1	600226-99-0	LOCK NUT M5 FZB	
11	1	1830717	STRAP BATTERY SLED F5	
12	1		BRACKET	
13	1		BRACKET	
14	1	1827754	SCREW ISO 7380 M4x6 10.9	
15	1	1827754	SCREW ISO 7380 M4x6 10.9	
16	1		BRACKET	
17	1	1827754	SCREW ISO 7380 M4x6 10.9	
18	1	1830724	CABLE CLIP O 13mm	
19	1	600226-99-0	LOCK NUT M5 FZB	
20	1	600239-99-0	WASH BRB 8.4x16x1.6 fzb	
21	1	600590-99-0	BOLT MC6S 8x 16 fzb	
22	1	1830747	CONSOLE CHASSIS, F5	
23	1		SPACER	
24	1	600203-99-0	BOLT M8 x 20mm SHCS	
25	1		HOOK TIE DOWN REAR LEFT	
26	1		SCREW ISO 10642 M10x20 Fe/Zn	
27	1		HOOK TIE DOWN REAR RIGHT	
28	1		BRACKET	
29	1	600239-99-0	WASH BRB 8.4x16x1.6 fzb	
30	1		SCREW ISO 4762 M8x20 Fe/Zn L.CDIN 267-28	
31	1	1831400	CABLE CLIP MOTOR LEFT	
32	1		SCREW	
33	1	600189-99-0	BOLT MC6S 5x10 fzb	
34	1	1831401	CABLE CLIP MOTOR RIGHT	



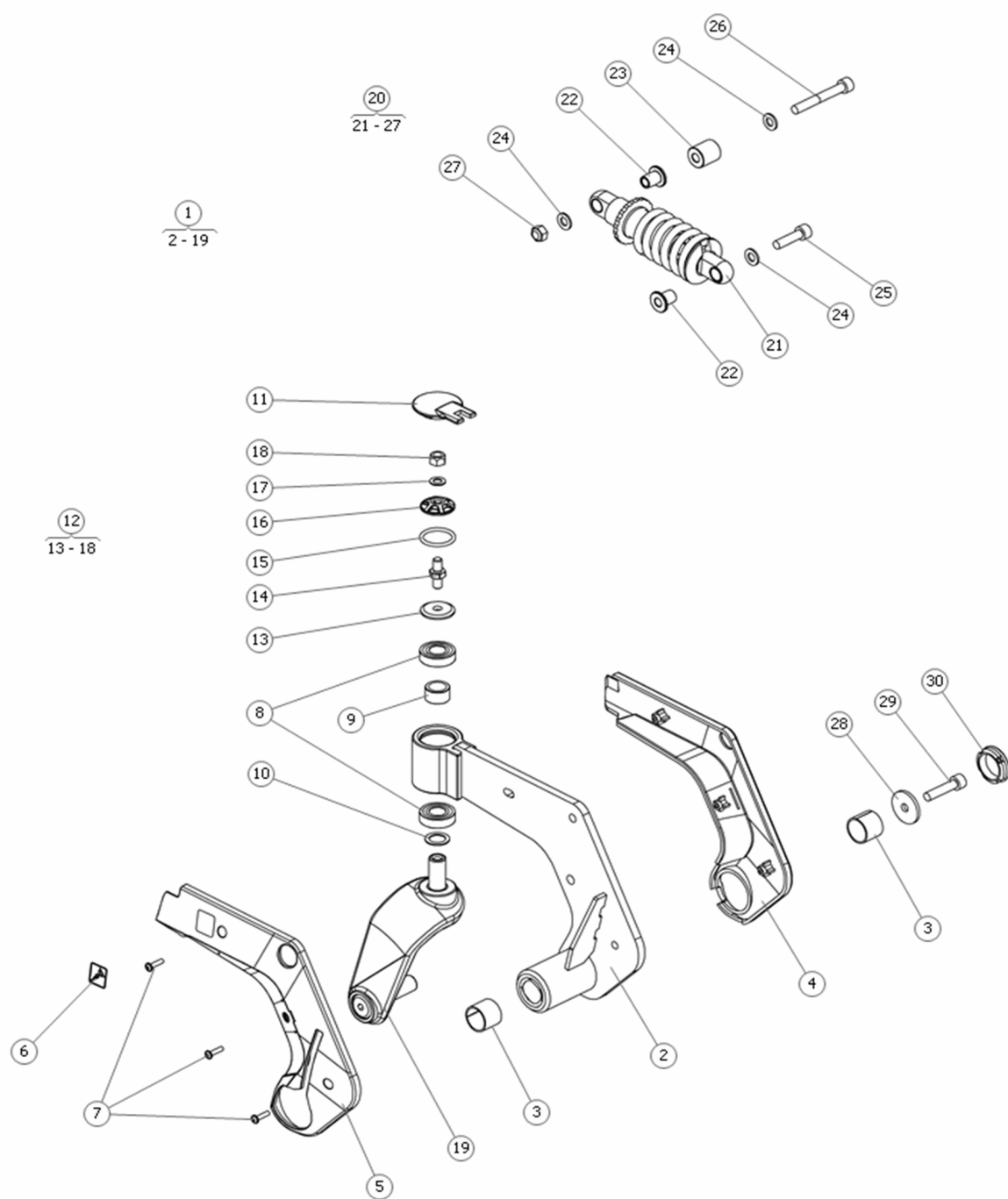
Spare Part F5

Support wheels

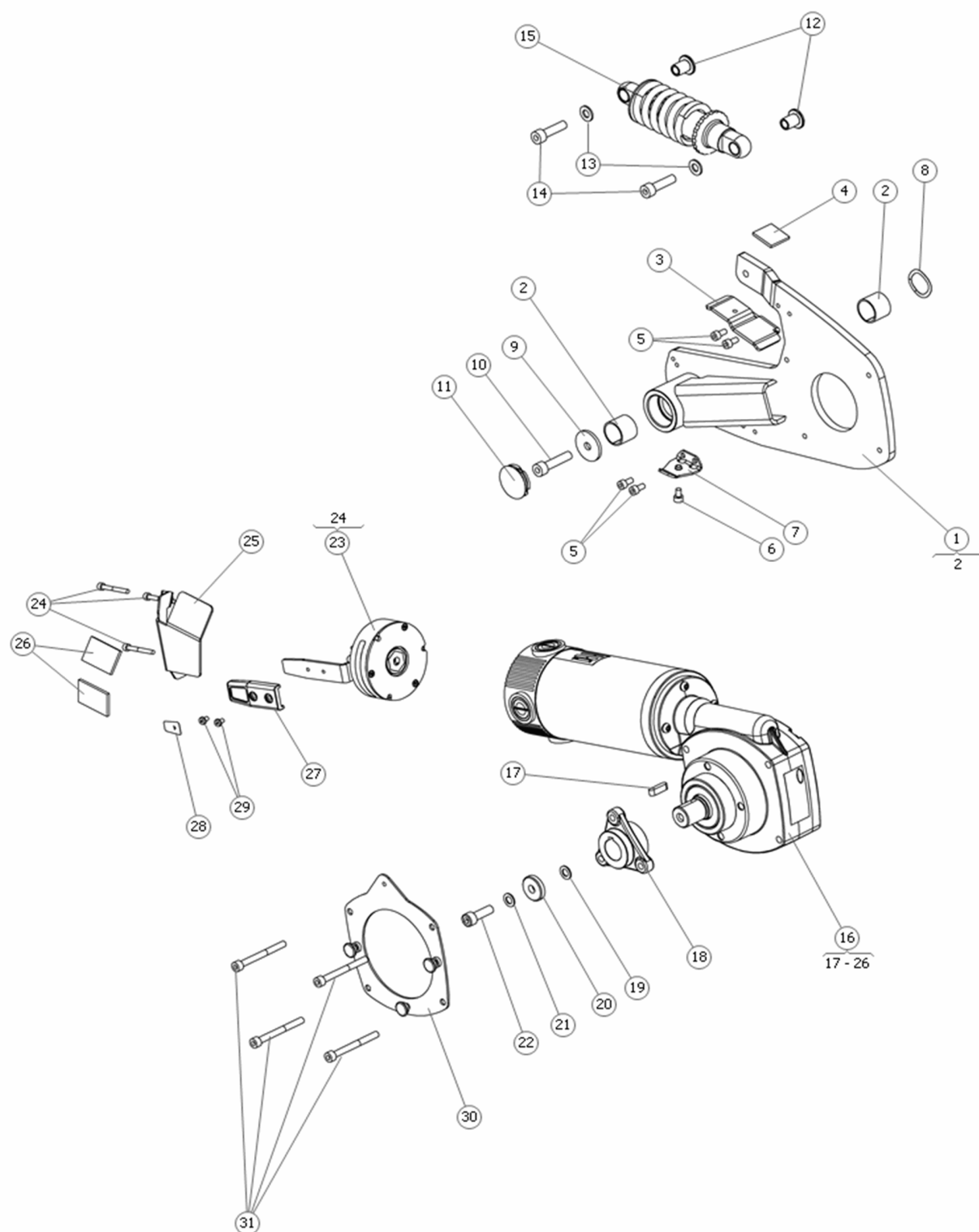
Pos	Qty	Stock Code	Description	Remark
1	1	1830752	SUPPORT WHEEL KIT, PAIR	
2	1	1831663	BRACKET, SUPPORT WHEEL	
3	1	1831395	DECAL, SUPPORT WHEELS	
4	1	1831394	DECAL, READ INSTRUCTIONS	
5	1	1831396	DECAL, SUPPORT WHEELS	
6	1	1831664	BRACKET, SUPPORT WHEEL	
7	1	1822017	ANTI-TIP WHEEL 100odx24w	
8	1	613114-99-0	BOLT K6S 8x40	
9	1	612531-99-0	SPACER DB DIN988 8x14x0.5	
10	1	600228-99-0	NYLOCK NUT M8	
11	1	600203-99-0	BOLT M8 x 20mm SHCS	
12	1	1831742	TIE DOWN BRACKET FRONT LE	
13	1	1831397	DECAL, TIE DOWN, F5	
14	1	600203-99-0	BOLT M8 x 20mm SHCS	
15	1	600239-99-0	WASH BRB 8.4x16x1.6 fzb	
16	1	1831743	TIE DOWN BRACKET FRONT RI	
17	1	1831238	TIE DOWN BRACKET KIT	



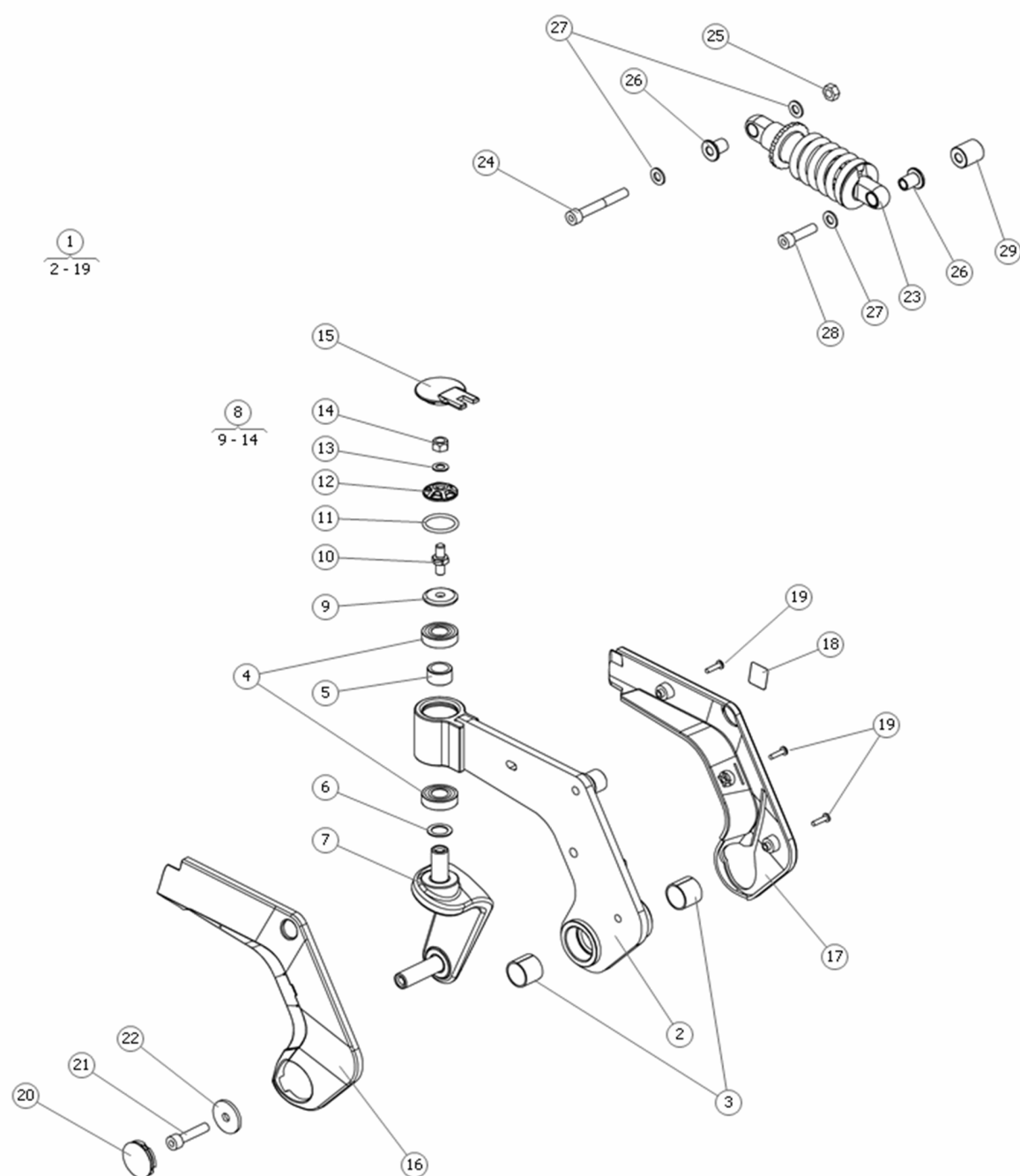
Pos	Qty	Stock Code	Description	Remark
1	1	1831187	SWING ARM FRONT LEFT, F5	
2	1	612745-99-0	SLIDE BEARING 22/25x20SBT	
3	1		BRACKET	
4	1		RECLOSABLE FASTENER 25 mm ADHESIVE	
5	1	600189-99-0	BOLT MC6S 5x10 fzb	
6	1	600188-99-0	BOLT MC6S 5x 8 fzb	
7	1		BRACKET	
8	1	1830715	WASHER SPRING DISC	
9	1	316714-99-0	WASHER SLEWING BRACKET	
10	1	1830714	SHCS M8x35 LOCKING COAT	
11	1	301146-00-0	PLASTIC PLUG, REAR WHEEL	
12	1	1831707	SOCKET, SHOCK ABSORBER	
13	1	600239-99-0	WASH BRB 8.4x16x1.6 fzb	
14	1	601075-99-0	BOLT ESLOK 8x30 fzb	
15	1	1831706	SHOCK ABSORBER, F5 160mm	
16	1	1830578	DRIVE UNIT, LEFT, F5	
17	1	600855-99-0	KEY 6x6x22 DRIVE MOTOR	
18	1		HUB Ø22x28,5	
19	1		WASH 8.4x15x1.5 PA	
20	1	612513-99-0	WASH 8.4x23x5 HB 305	
21	1	612531-99-0	SPACER DB DIN988 8x14x0.5	
22	1	612512-99-0	BOLT ISO 4762 M8x25	
23	1	1830713	MAGNETIC WHEEL LOCK F5	
24	1	602233-99-0	BOLT MC6S 4x35	
25	1		BRACKET	
26	1		RECLOSABLE FASTENER 25,4 ADHESIVE	
27	1	1830712	HANDLE BRAKE RELEASE	
28	1	1831390	NOT YET AVAILABLE	
29	1	1827754	SCREW ISO 7380 M4x6 10.9	
30	1		BRACKET	
31	1	601923-99-0	BOLT MC6S 6x60 fzb	



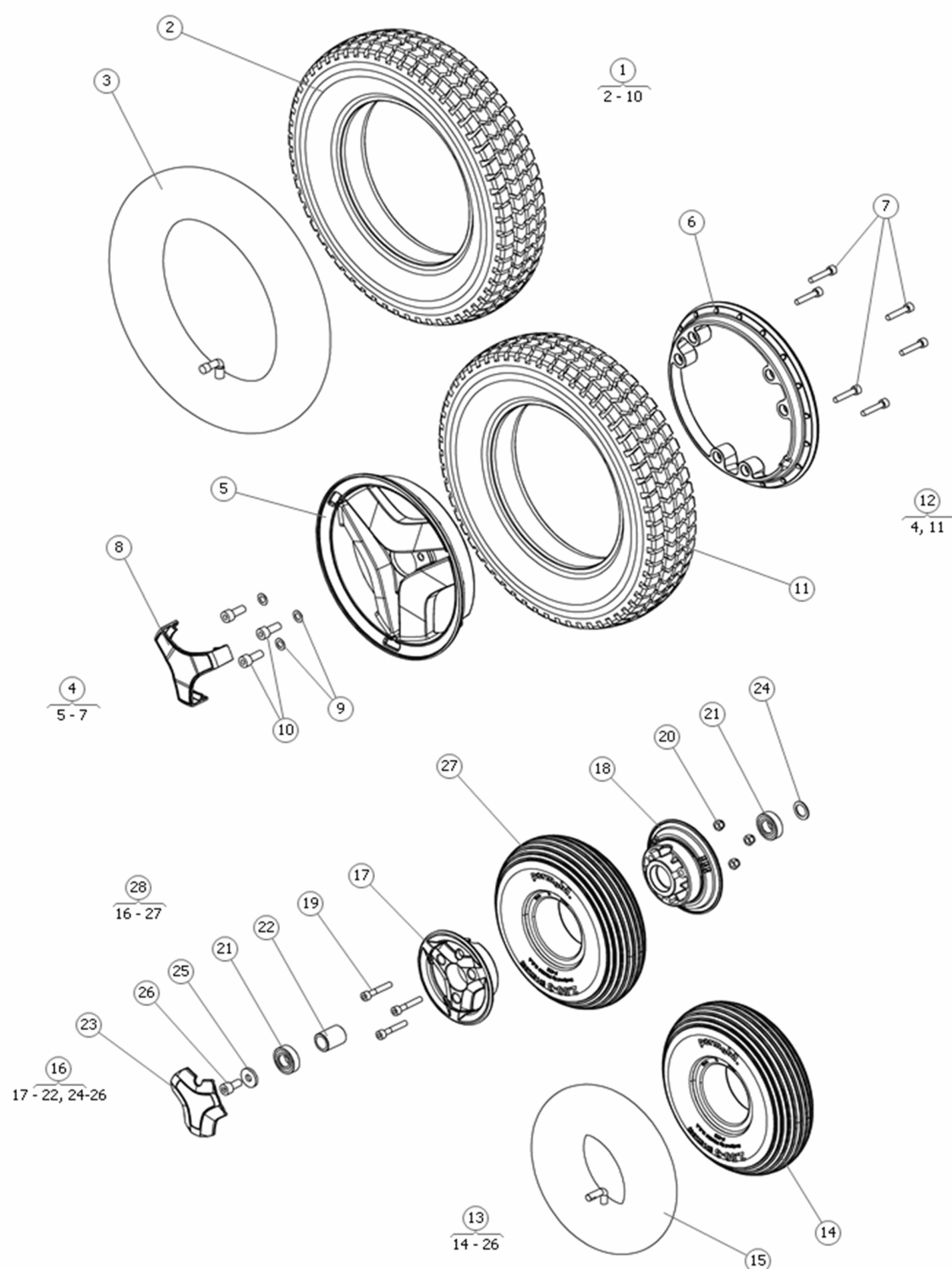
Pos	Qty	Stock Code	Description	Remark
1	1	1830753	SWING ARM REAR LEFT, F5	
2	1		SWING ARM	
3	2	612745-99-0	SLIDE BEARING 22/25x20SBT	
4	1	1831546	COVER SWINGARM F5 REAR	
5	1	1831545	COVER SWINGARM F5 REAR	
6	1	1831397	DECAL, TIE DOWN, F5	
7	3	613078-99-0	Tapping screw 4x16 Fe/Zn	
8	2	600752-99-0	BALL BEARING 6002-2RS1	
9	1	1831010	SPACER O16xO22x12.5	
10	1	1828317	SHIM WASHER,WHEELFORK MWD	
11	1	1830748	COVER WHEELFORK F5	
12	1	1826690	REPLACED BY 1830890	
13	1		FRICTIONS BRAKE	
14	1		FRICTIONS BRAKE	
15	1	613957-99-0	RUBBER RING,SIMRIT#447592	
16	1		FRICTIONS BRAKE	
17	1		SHIM WASHER	
18	1		PREVAILING TORQUE TYPE HEXAGON NUT	
19	1	1830755	WHEELFORK LEFT, F5	
20	1	1830764	SHOCK ABSORBER, INCL HDW	
21	1	1831706	SHOCK ABSORBER, F5 160mm	
22	2	1831707	SOCKET, SHOCK ABSORBER	
23	1	1831705	SPACER, SHOCK ABSORBER F5	
24	3	600239-99-0	WASH BRB 8.4x16x1.6 fzb	
25	1	601075-99-0	BOLT ESLOK 8x30 fzb	
26	1	600719-99-0	BOLT MC6S 8x 60 fzb	
27	1	600228-99-0	NYLOCK NUT M8	
28	1	316714-99-0	WASHER SLEWING BRACKET	
29	1	1830714	SHCS M8x35 LOCKING COAT	
30	1	301146-00-0	PLASTIC PLUG, REAR WHEEL	



Pos	Qty	Stock Code	Description	Remark
1	1	1831188	SWING ARM FRONT RIGHT, F5	
2	1	612745-99-0	SLIDE BEARING 22/25x20SBT	
3	1		BRACKET	
4	1		RECLOSABLE FASTENER 25 mm ADHESIVE	
5	1	600189-99-0	BOLT MC6S 5x10 fzb	
6	1	600188-99-0	BOLT MC6S 5x 8 fzb	
7	1		BRACKET	
8	1	1830715	WASHER SPRING DISC	
9	1	316714-99-0	WASHER SLEWING BRACKET	
10	1	1830714	SHCS M8x35 LOCKING COAT	
11	1	301146-00-0	PLASTIC PLUG, REAR WHEEL	
12	1	1831707	SOCKET, SHOCK ABSORBER	
13	1	600239-99-0	WASH BRB 8.4x16x1.6 fzb	
14	1	601075-99-0	BOLT ESLOK 8x30 fzb	
15	1	1831706	SHOCK ABSORBER, F5 160mm	
16	1	1830579	DRIVE UNIT, RIGHT, F5	
17	1	600855-99-0	KEY 6x6x22 DRIVE MOTOR	
18	1		HUB Ø22x28,5	
19	1		WASH 8.4x15x1.5 PA	
20	1	612513-99-0	WASH 8.4x23x5 HB 305	
21	1	612531-99-0	SPACER DB DIN988 8x14x0.5	
22	1	612512-99-0	BOLT ISO 4762 M8x25	
23	1	1830713	MAGNETIC WHEEL LOCK F5	
24	1	602233-99-0	BOLT MC6S 4x35	
25	1		BRACKET	
26	1		RECLOSABLE FASTENER 25,4 ADHESIVE	
27	1	1830712	HANDLE BRAKE RELEASE	
28	1	1831390	NOT YET AVAILABLE	
29	1	1827754	SCREW ISO 7380 M4x6 10.9	
30	1		BRACKET	
31	1	601923-99-0	BOLT MC6S 6x60 fzb	



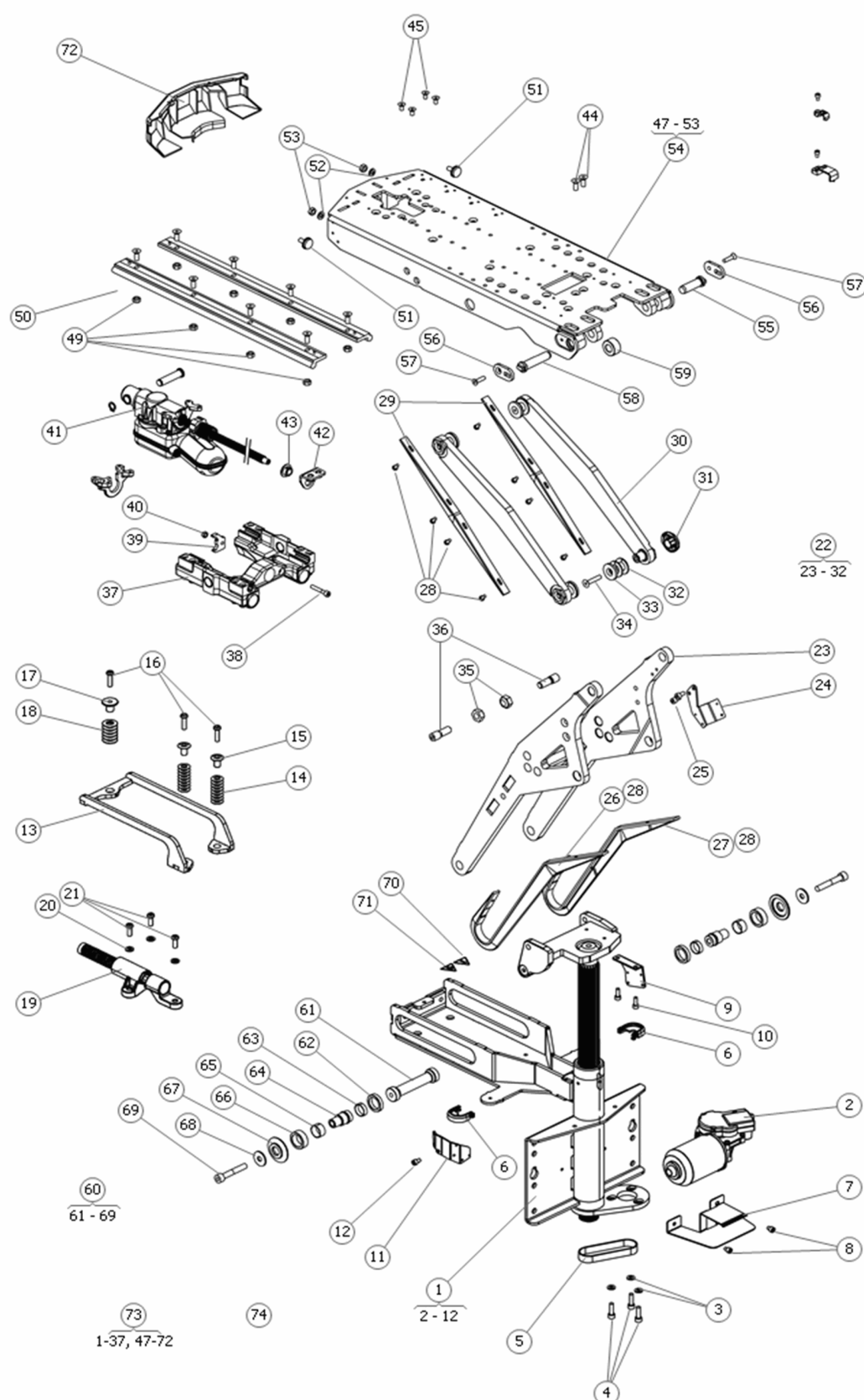
Pos	Qty	Stock Code	Description	Remark
1	1	1830754	SWING ARM REAR RIGHT, F5	
2	1		SWING ARM REAR RIGHT	
3	1	612745-99-0	SLIDE BEARING 22/25x20SBT	
4	1	600752-99-0	BALL BEARING 6002-2RS1	
5	1	1831010	SPACER O16xO22x12.5	
6	1	1828317	SHIM WASHER,WHEELFORK MWD	
7	1	1830756	WHEELFORK RIGHT, F5	
8	1	1826690	REPLACED BY 1830890	
9	1		FRICTIONS BRAKE PLATE LOWER	
10	1		FRICTIONS BRAKE SHAFT	
11	1	613957-99-0	RUBBER RING.SIMRIT#447592	
12	1		FRICTIONS BRAKE ADJUSTMENT UPPER	
13	1		SHIM WASHER DIN 988 BR DB 8x14x1	
14	1		NUT DIN 980V M8 Fe/Zn	
15	1	1830748	COVER WHEELFORK F5	
16	1	1831548	COVER SWINGARM F5 REAR	
17	1	1831547	COVER SWINGARM F5 REAR	
18	1	1831397	DECAL, TIE DOWN, F5	
19	1	613078-99-0	Tapping screw 4x16 Fe/Zn	
20	1	301146-00-0	PLASTIC PLUG, REAR WHEEL	
21	1	1830714	SHCS M8x35 LOCKING COAT	
22	1	316714-99-0	WASHER SLEWING BRACKET	
23	1	1831706	SHOCK ABSORBER, F5 160mm	
24	1	600719-99-0	BOLT MC6S 8x 60 fzb	
25	1	600228-99-0	NYLOCK NUT M8	
26	1	1831707	SOCKET, SHOCK ABSORBER	
27	1	600239-99-0	WASH BRB 8.4x16x1.6 fzb	
28	1	601075-99-0	BOLT ESLOK 8x30 fzb	
29	1	1831705	SPACER, SHOCK ABSORBER F5	



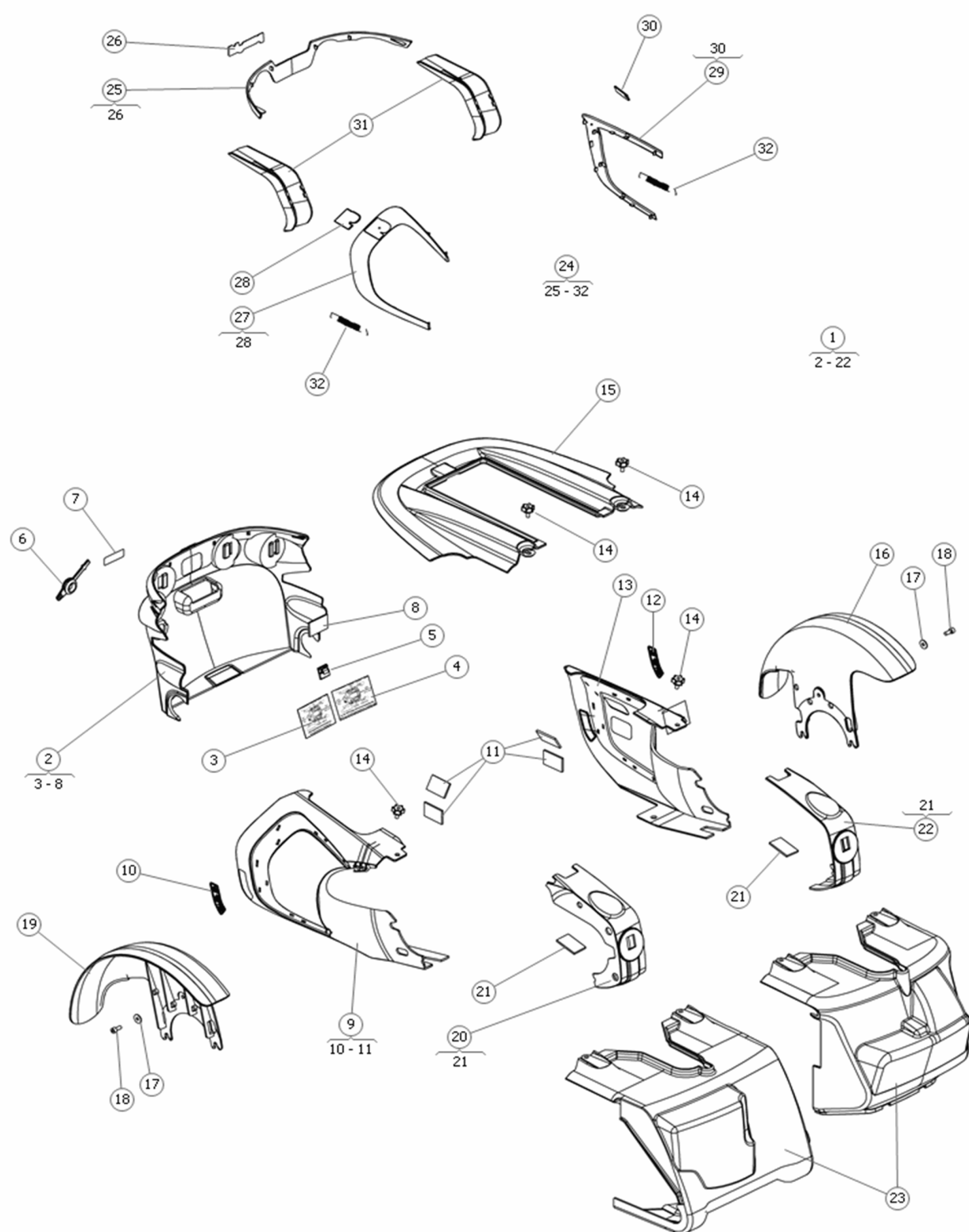
Spare Part F5

Wheels

Pos	Qty	Stock Code	Description	Remark
1	1	1830892	DRIVE WHEEL ASSY, 3.00-8"	With black tire
1	1	1830891	WHEEL 3.00-8 PNEUMATIC	With gray tire
2	1	1824843	TIRE 3.00 X 8 PRIMO, AIR	Tire color: Gray
2	1	1830765	TIRE, 3.00x8 BLACK NON-	Tire color: Black
3	1	600770-99-0	TUBE 3.00-8 C2K,HD3,C350	
4	1	1830991	RIM, DRIVE WHEEL F3 F5	
5	1		Rim half outer	
6	1		Rim half inner	
7	1		Screw ISO 4762 M6x30 Fe/Zn L.C	
8	1	1830781	HUB CAP w/REFLECTOR,DRIVE	Incl. reflector sticker
9	1	612531-99-0	SPACER DB DIN988 8x14x0.5	
10	1	600203-99-0	BOLT M8 x 20mm SHCS	
11	1	1830767	TIRE, 3.00x8 SOLID, BLACK	Tire color: Black
11	1	1822361	TIRE 3.00-8" SOLID FOR	Tire color: gray
12	1	1830894	DRIVE WHEEL ASSY, 3.00x8"	With black tire
12	1	1830893	WHEEL 3.00-8 SOLID FRONT	With gray tire
12	1	1831687	WHEEL 3.00x8, AGGRESSIVE	With black tire
13	1	1830778	CASTER WHEEL ASSY 210x65	Tire color: Black
13	1	1830777	CASTER WHEEL ASSY 210x65	Tire color: Gray
14	1	1830790	TIRE, PNEUMATIC 210x65	Tire color: Black
14	1	602569-08-0	TIRE, AIR, CASTER 210x65	Tire color: Gray
15	1	602568-99-0	TUBE FOR CASTER 210x65	
16	1	1830997	RIM, CASTER, F3 F5	
17	1		Rim half outer	
18	1		Rim half inner	
19	1	601333-99-0	BOLT MC6S 6x35 fzb	
20	1	602799-99-0	LOCK NUT M6 HIGH fzb	
21	1	600752-99-0	BALL BEARING 6002-2RS1	
22	1		Spacer	
23	1	1830770	HUB CAP w/REFLECTOR	
24	1	1828317	SHIM WASHER,WHEELFORK MWD	
25	1	305390-99-0	WASH 8.5x23x3 fzb	
26	1	613088-99-0	BOLT MC6S 8x16 fzb ESL	
27	1	1830791	TIRE, SOLID 210x65, BLACK	Tire color: Black
27	1	612397-08-0	TIRE 210x65 SOLID GRAY	Tire color: Gray
28	1	1830780	CASTER WHEEL ASSY 210x65	Tire color: Black
28	1	1830779	CASTER WHEEL ASSY 210x65	Tire color: Gray
28	1	1831688	WHEEL 210x65 SOLID BLACK	Tire color: Black



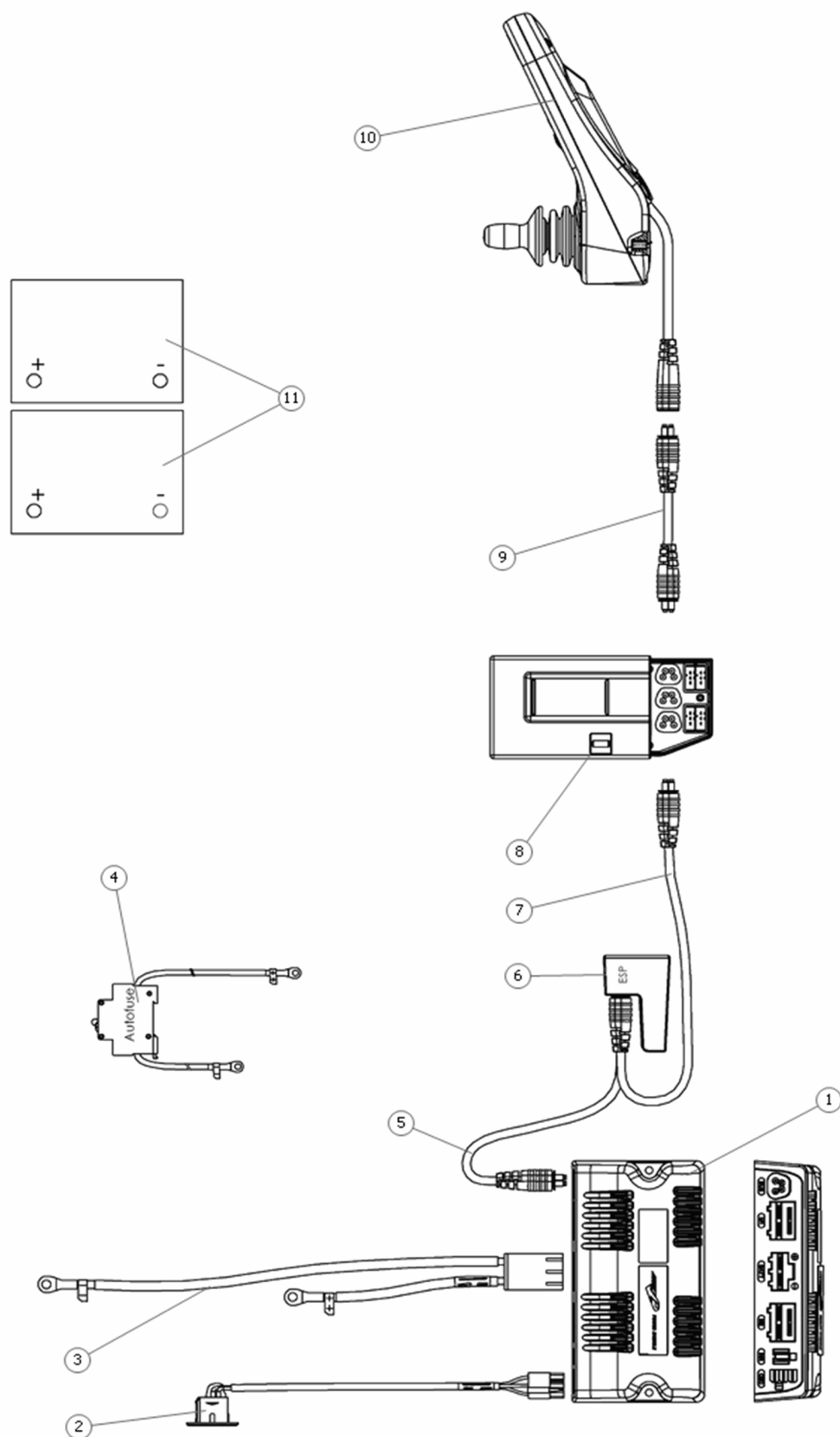
Pos	Qty	Stock Code	Description	Remark
1	1	1831116	SEAT ELEVATOR AP ELEVATOR	
2	1	1831286	SEAT ELEV MOTOR INCL PCB	
3	1	600238-99-0	WASH BRB 6.4x12x1.5 fzb	
4	1	600194-99-0	BOLT MC6S 6x20 fzb	
5	1		Timing belt	
6	1	1831287	PROTECTOR PLASTIC CLIP	
7	1		Holder electronics	
8	1	601126-99-0	BOLT MC6S 5x 6 fzb	
9	1		Cable bracket	
10	1	600190-99-0	BOLT MC6S 5x14 fzb	
11	1		Bracket	
12	1	600188-99-0	BOLT MC6S 5x 8 fzb	
13	1		Bow	
14	1		Disc spring DIN 2093 9,2x18x0,7	
15	1		Socket disc spring	
16	1	602397-99-0	BOLT K6S 6x22 fzb	
17	1		Socket disc spring	
18	1		Disc spring DIN 2093 11,2x22,5x0,8	
19	1	1831009	SOFT STOP ASSEMBLY	
20	1	600238-99-0	WASH BRB 6.4x12x1.5 fzb	
21	1	601675-99-0	BOLT K6S 6x16 fzb	
22	1		Frame kit	
23	1		Frame lower	
24	1		Bracket	
25	1	600190-99-0	BOLT MC6S 5x14 fzb	
26	1		Pinchguard Right lower	
27	1		Pinchguard Left	
28	1		Screw ISO 7380 M4x8 Fe/Zn	
29	1		Pinchguard arm	
30	1		Arm right/left	
31	1		Cover	
32	1		Slip washer 14/26x1,5 SBT	
33	1		Washer	
34	1	600735-99-0	BOLT MF6S 6x25 fzb	
35	1	600229-99-0	LOCK NUT M10 FZB	
36	1		Pin bolt	
37	1		Carriage	
38	1	600196-99-0	BOLT MC6S 6x30 fzb	
39	1	1831283	WORM NUT LOCKING	
40	1	600227-99-0	LOCK NUT M6 LOW fzb	
41	1	1831281	ACTUATOR TILT AP ELEV	
42	1		Bracket	
43	1		Bearing	
44	1	600541-99-0	BOLT MF6S 6x16 fzb	
45	1	601708-99-0	BOLT M5 x 10mm FHCS	
49	1	600232-99-0	NUT M6M 6 fzb	
50	1		Parallel pin	
51	1	1831550	RUBBER BLOCK O18x7 M6x14	
52	1	600238-99-0	WASH BRB 6.4x12x1.5 fzb	
53	1	600232-99-0	NUT M6M 6 fzb	
54	1		Plat	
55	1		Shaft	
56	1		Lock plate	
57	1	600209-99-0	BOLT MF6S 5x20 fzb	
58	1		Shaft	
59	1		Socket L=13,5 Ø25/12,2	
60	1	1831284	TRACK WHEELKIT	
61	1		Shaft Ø22 L=90,5	
62	1		Roller	
63	1		Slide bearing 18/20x6 SBT	
64	1		Shaft	
65	1		Slide bearing 18/20x10 SBT	
66	1		Roller	
67	1		Washer	
68	1	612393-99-0	Washer ISO 7093-1 Fe/Zn 8	
69	1	600276-99-0	BOLT MC6S 8x 50 fzb	
70	1	1831398	DECAL, WARNING	
71	1	1831391	DECAL, PINCH RISK, F5	
72	1		Cover	
73	1	1831371	SEAT TILT ONLY	
74	1	1831372	SEAT TUBE FIXED MANUAL TI	



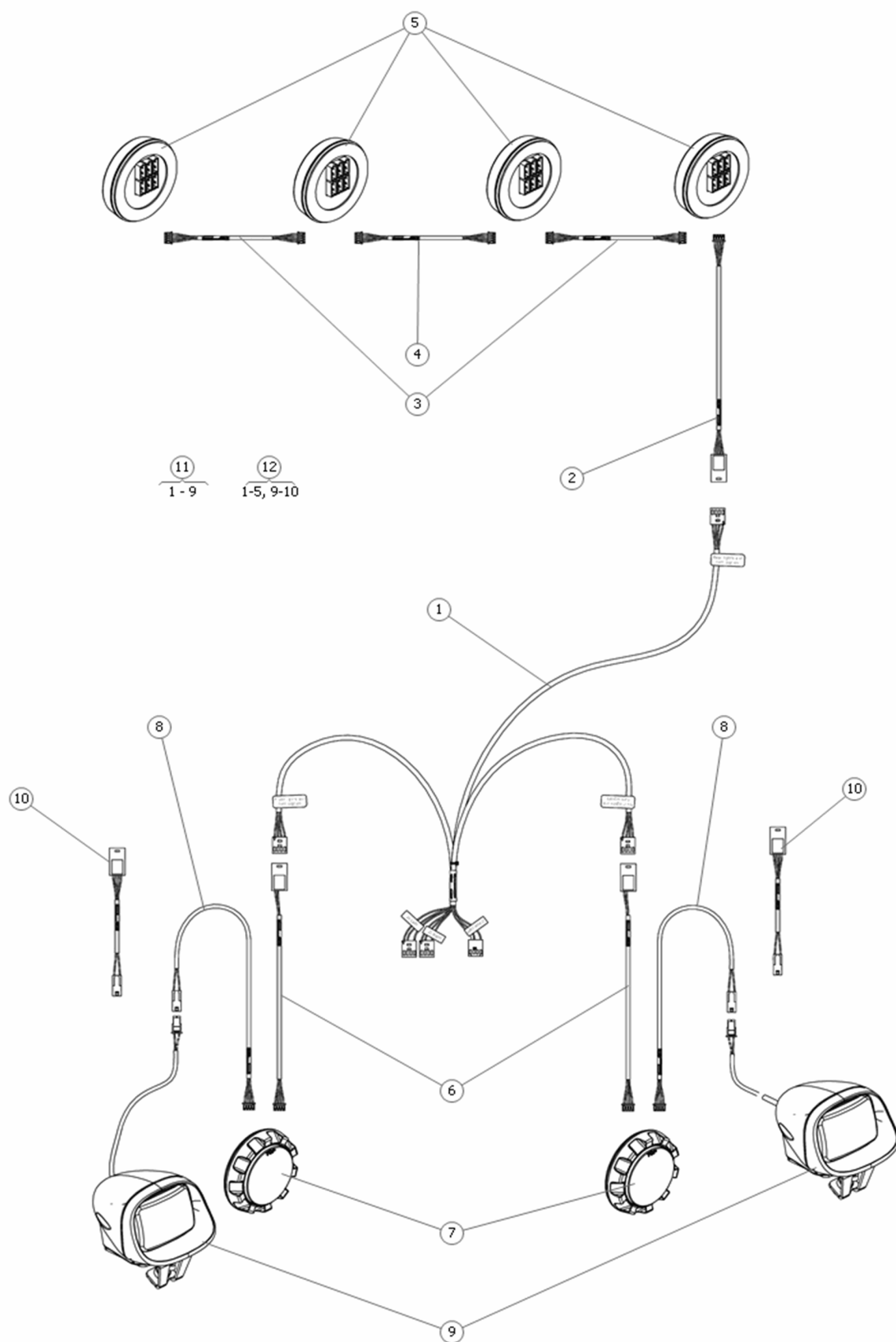
Spare Part F5

Covers

Pos	Qty	Stock Code	Description	Remark
1	1	1830896	USE 1831747 THRU 1831752	
2	1	1831755	COVER, REAR, BLACK, F3 F5	
3	1		STICKER Battery connections/Fuses	
4	1		STICKER Battery connection	
5	1	602615-99-0	CABLE TIE HOLD. ACC19 A-C	
6	1		PLUG ELECTRONIC	
7	1	1831393	NOT YET AVAILABLE	
8	1		RECLOSABLE FASTENER 25.4 ADHESIVE	
9	1	1831750	COVER F5, RIGHT MOTOR	
10	1	1831389	NOT YET AVAILABLE (RIGHT)	
11	1		RECLOSABLE FASTENER 25.4 ADHESIVE	
12	1	1831388	NOT YET AVAILABLE (LEFT)	
13	1	1831748	COVER F5, LEFT MOTOR	
14	1	613890-99-0	LOCK HANDLE M5x10 LOW	
15	1	1831756	COVER, TOP, BLACK, F3 F5	
16	1	1831751	COVER F5, LEFT FENDER	
17	1	612857-99-0	WASHER ISO 7093-1 5 200	
18	1	600169-99-0	BOLT M5 x 12mm SHCS	
19	1	1831752	COVER F5, RIGHT FENDER	
20	1	1831749	COVER F5, SWINGARM RIGHT	
21	1		RECLOSABLE FASTENER 25.4 ADHESIVE	
22	1	1831747	COVER F5, SWINGARM LEFT	
23	1	1830897	SHROUD COVER, FRONT F3 F5	
23	1	1830898	SHROUD COVER FRONT F5	
24	1	1831133	SHROUD ACCENT KIT, MID-	
24	1	1831136	SHROUD ACCENT KIT, POWER	
24	1	1831137	SHROUD ACCENT KIT,RADIANT	
24	1	1830907	SHROUD ACCENT KIT, SUN-	
24	1	1831134	SHROUD ACCENT KIT, OCEAN	
24	1	1831132	SHROUD ACCENT KIT GALAC-	
24	1	1831138	SHROUD ACCENT KIT, TITAN	
24	1	1831135	SHROUD ACCENT KIT,PHANTOM	
25	1		COVER REAR F5 ACCENT DETAIL w. STICKER	
26	1	1828133	STICKER PERMOBIL	
27	1		COVER SWINGARM F5 RIGHT/FRONT ACCENT DETAIL w. STICK...	
28	1		DECAL F5 CHASSI RIGHT	
29	1		COVER SWINGARM F5 LEFT/FRONT ACCENT DETAIL w. STICKER	
30	1		DECAL F5 CHASSI LEFT	
31	1		COVER REAR SWINGARM ACCENT DETAIL	
32	1	1831717	DECAL, "CORPUS"	
32	1	1831716	DECAL, "CORPUS VS"	



Pos	Qty	Stock Code	Description	Remark
1	1	1821539	REPLACED BY 1825774 90A	
1	1	1825774	POWER MODULE R-net, 90	
1	1	1822393	POWER MODULE R-net, 120	
2	1	1830727	CABLE OBC CHARGER CONNECT	
3	1	1830719	CABLE BATTERY, F3 F5	
4	1	1830726	CABLE MAIN FUSE, F3 F5	
5	1	1830720	CABLE BUS R-NET 300mm	L=300mm
6	1	1822804	ESP MODULE R-NET	
7	1	1830721	CABLE BUS R-NET 700mm	L=700mm
8	1	1830728	PCB ICS MASTER MODULE	
9	1	1821526	R-NET BUS CABLE 2.5m /	L=2500mm
10	1	1822389	R-NET STD JOYST MODULE w/	
10	1	1822390	R-NET STD JOYST MODULE w/	
10	1	1825758	R-NET LED JOYST MODULE w/	
10	1	1825746	R-NET COLOR JOYST MODULE	
10	1	1831273	CONTROL PANEL R-NET CJSM2	
11	1	602130-99-0	BATTERY - GROUP 24 FEMALE	



Spare Part F5

Lights

Pos	Qty	Stock Code	Description	Remark
1	1	1830771	CABLE, ICS ADAPTER,LIGHTS	
2	1	1830775	CABLE, JUMPER LIGHT,F3 F5	L=140mm
3	1	1830152	CABLE JUMPER ICS 100mm	L=100mm
4	1	1830774	CABLE, ICS JUMPER, LIGHTS	L=280mm
5	1	1830147	TURN SIGNAL, REAR, RED	Red reflector
6	1	1830773	CABLE, LIGHTS FRONT,F3 F5	
7	1	1830146	TURN SIGNAL, FRONT, WHITE	
8	1	1830772	CABLE, LIGHT FRONT, F3 F5	
9	1	1830760	FRONT LIGHT INCL BRACKET	
10	1	1830776	NOT USED IN USA	L=280mm
11	1	1830761	**PART ON HOLD**	
12	1	1830762	NOT USED IN USA	

Ordering information

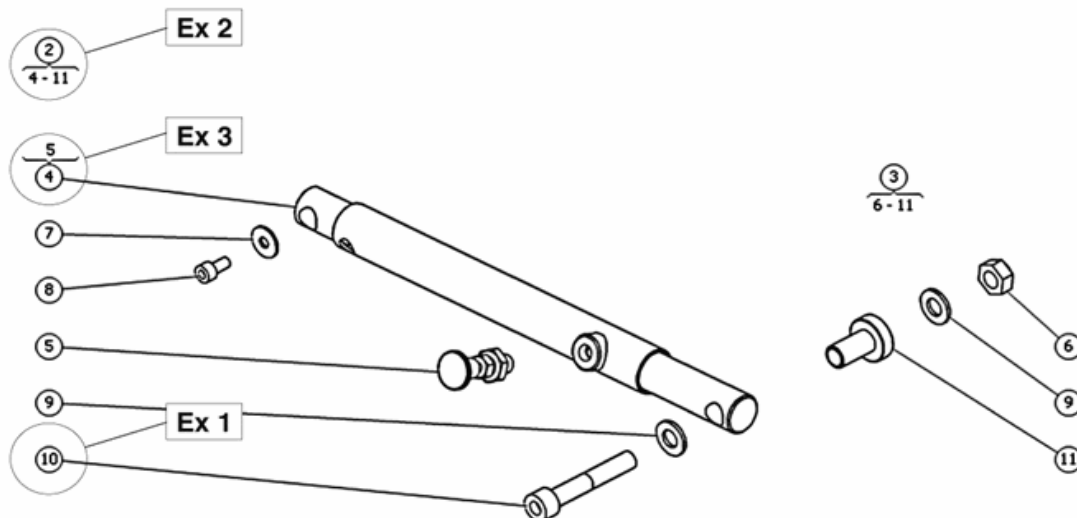
When you order spare parts, the following must always be specified:

- The product model (for example, power wheelchair C300).
- The description of the part. Always use the description used in this catalog.
- The entire part number.
- The quantity.

NB! In some cases, parts appear in the spare part catalog without a part number. This means that the part cannot be ordered from Permobil. We have, however, chosen to describe it for your information. Standard components such as screws, nuts, washers and similar parts can be purchased in an ordinary shop using the information in this catalog.

Parts

A part consists of one or more parts. If a part consists of several parts, a bracket in connection with the part's item bubble is used to show the parts included in the part in the exploded views. See examples 1, 2 and 3.



Example 1:

Position 10 refers to a single part, a screw.

Example 2:

Position 2 is a spare part consisting of the positions from 4 to 11.

Example 3:

Position 4 is an article that also includes position 5. In these cases the article or articles which referred to in the bracket, are pre-assembled on the main article (position 4).

Spare Parts Catalog

CONTACT PERMOBIL:

Permobil AB

Box 120
861 23 Timrå
Sverige

Tel: 060-59 59 00
Fax: 060-57 52 50
E-post: info@permobil.se

Permobil Inc. USA

300 Duke Drive
Lebanon, TN 37090
USA

Phone: 800-736-0925
Fax: 800-231-3256
Email: info@permobilusa.com

Permobil AS

Industriveien 16
Postboks 60
1483 Hagan Norge

Tlf. 815 30 077
Fax. 815 33 655
E-post: firmapost@permobil.no

Permobil Benelux BV

De Beitel 11
6466 GZ Kerkrade
Nederland

Tel: +31 (0)45 564 54 80
Fax: +31 (0)45 564 54 81
Email: info@permobil.nl

[illegible]

