

SPARE PART CATALOG

C400

Permobil power wheelchair



C400

Spare Part Catalog Reservdelskatalog

Permobil AB

Box 120
861 23 Timrå
Sverige
Tel: 060-59 59 00
Fax: 060-57 52 50
E-post: info@permobil.se

Permobil Inc. USA

6961 Eastgate Blvd.
Lebanon, TN 37090
USA
Phone: 800-736-0925
Fax: 800-231-3256
Email: info@permobilusa.com

Permobil AS

Hvamsvingen 22
2013 Skjetten
Norge
Tlf. 48 12 90 00
Fax. 63 84 48 50
E-post: firmapost@permobil.no

Permobil Europe BV

De Doom 22
NL-6419 CX Heerlen
Netherlands
Tel: +31 (0)45 564 54 90
Fax: +31 (0) 45 564 54 91
Email: europe@permobil.nl

Produced and published by Permobil AB, Sweden

Contents

Contact information

Contents, English

Contents, Swedish

Chassis

Driving unit

Brake release

Wheels three spoke

Covers

Seat tube

Seat elevator, standard

Seat elevator, -60

Seat elevator, -50

Electronics P+

Electronics VSI

Electronics R-net

Lighting

Ordering information, English

Order information, Swedish

Innehåll

Kontaktinformation

Innehållsförteckning, engelsk

Innehållsförteckning, svensk

Chassi

Drivpaket

Bromsfrigöring

Hjul, treekrade

Kåpor

Fast sitsrör

Sitslyft, standard

Sitslyft, -60

Sitslyft, -50

Elektronik P+

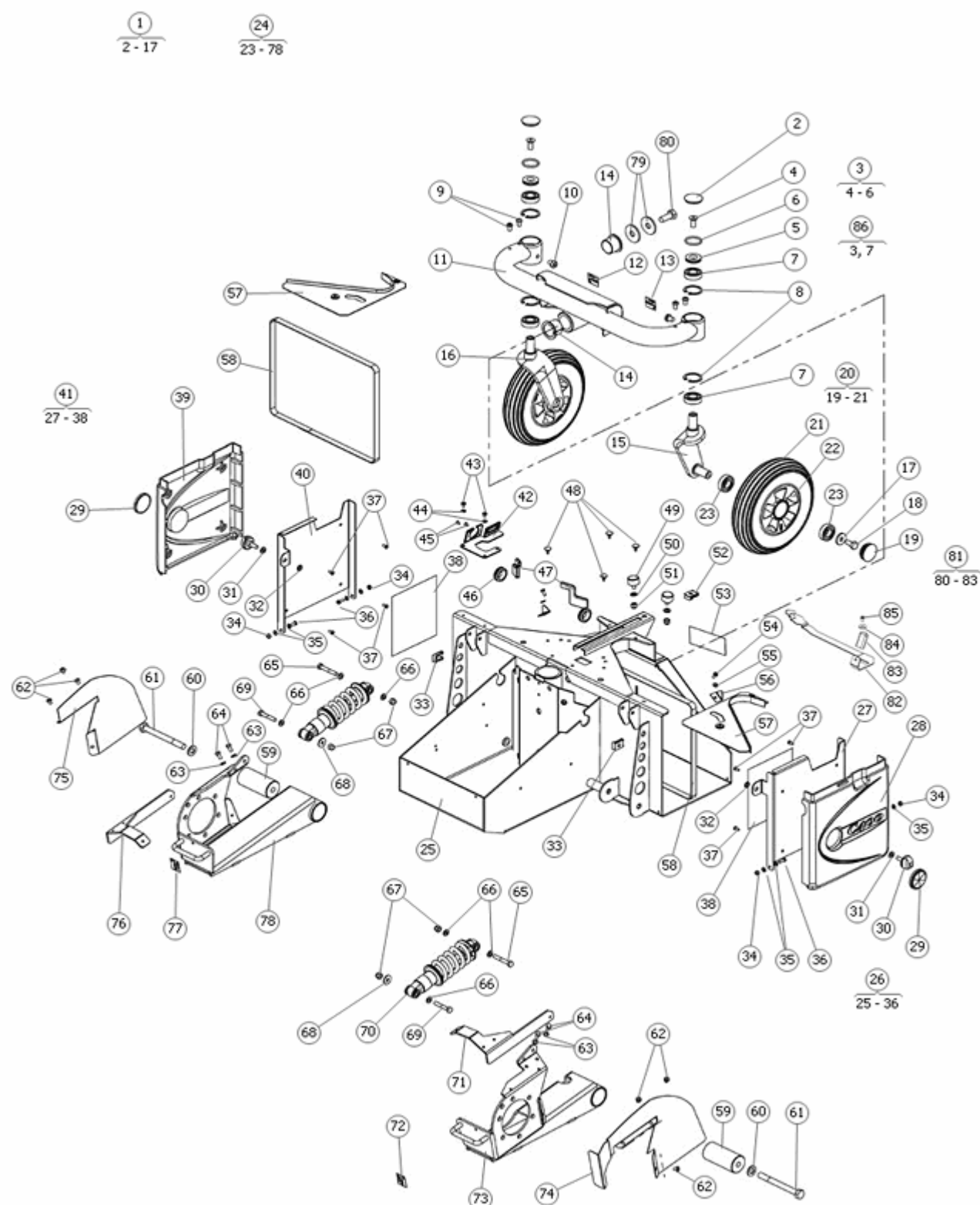
Elektronik VSI

Elektronik R-net

Belysning

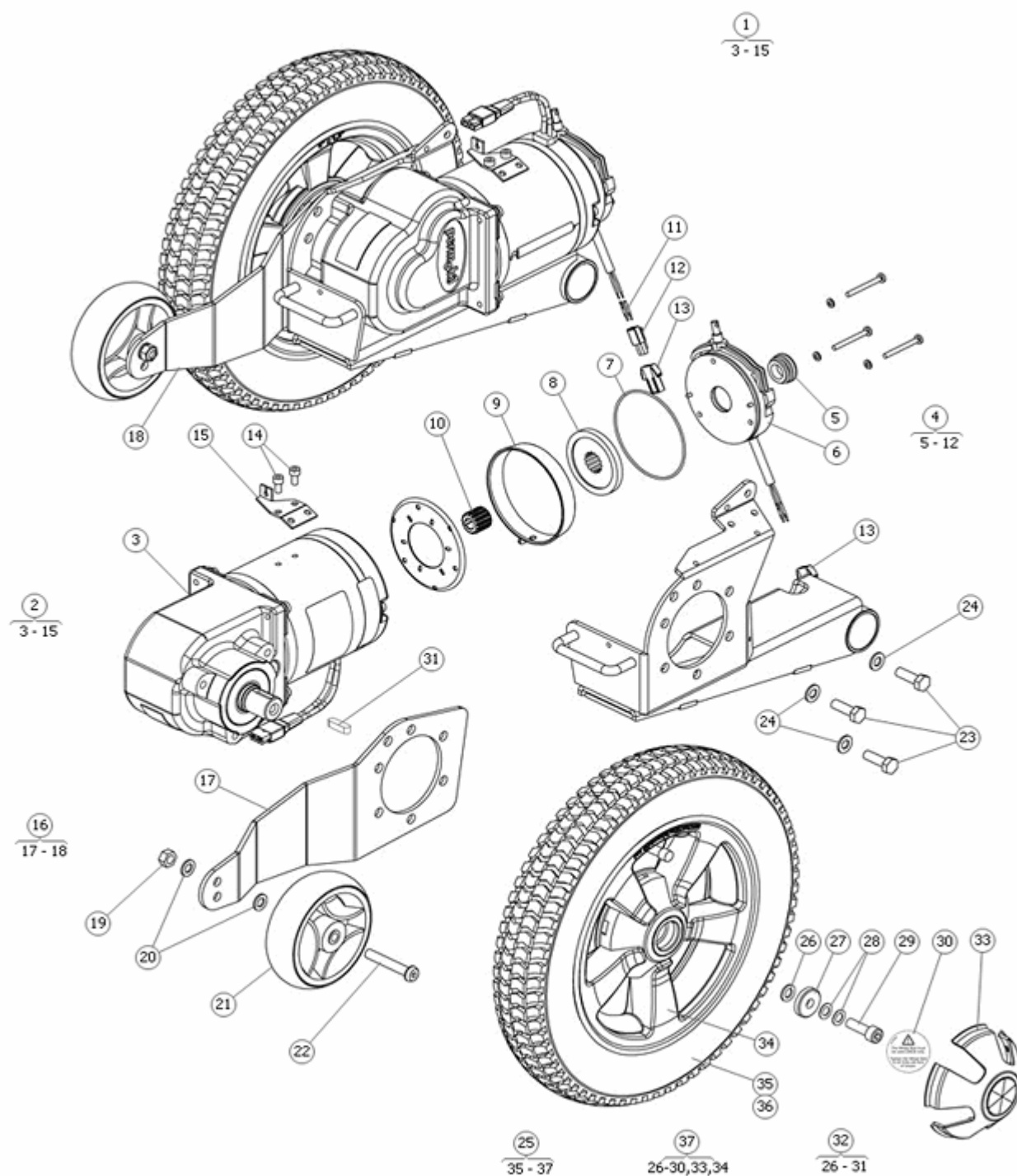
Orderinformation, engelsk

Orderinformation, svensk

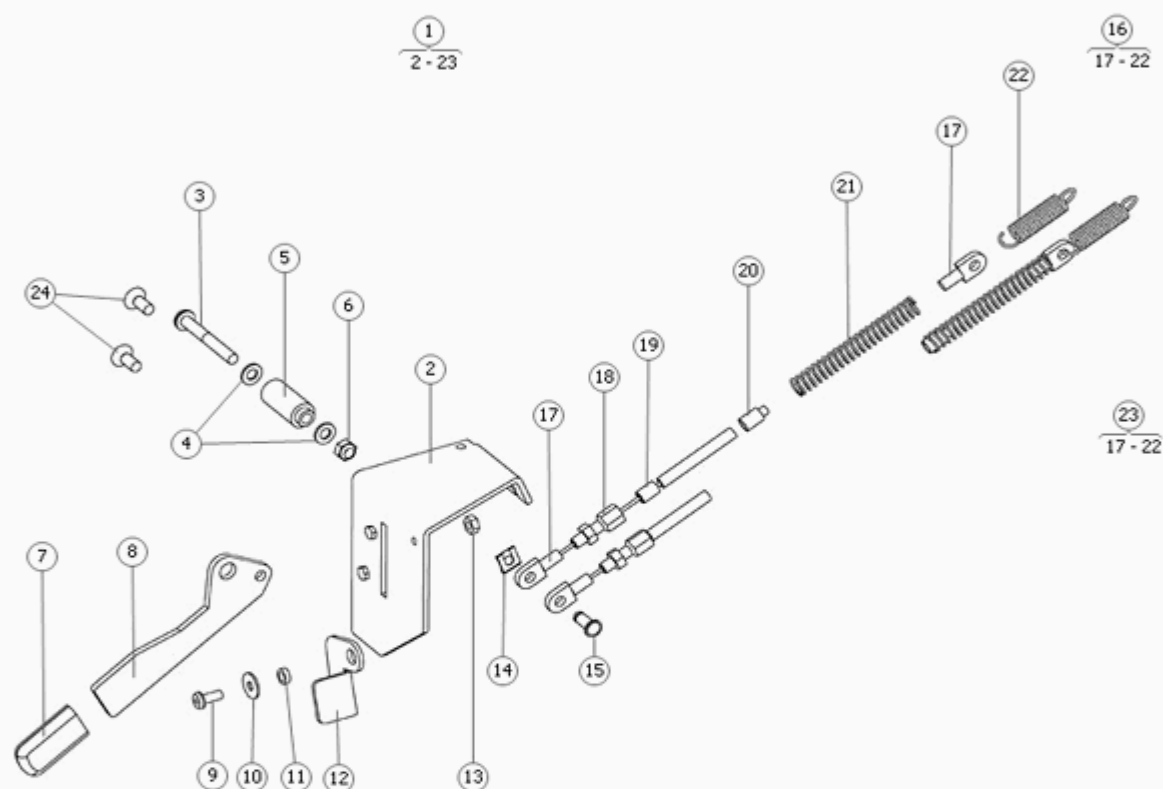


Pos	Qty	Stock Code	Description	Remark
1	1		SUSPENSION	
2	2	311314-99-0	PL PLUG REAR WHEEL	
3	2	1822628	FRICTION BRAKE KIT	
4	2	612378-99-0	SKRUV ISO 10642 M8x20 ESL	
5	2	1820403	FRICT.PLATE WHEELFORK	
6	2	1820404	RUBBER RING 24.2x3 EPDM	
7	4	600752-99-0	BALL BEAR 6002-2RS1	
8	4	600751-99-0	CIRCLIP SGH 32	
9	4	600736-99-0	BOLT K6S 6x10 fzb	
10	2	601953-99-0	BOLT K6S 8x10 fzb	
11	1	312827-28-0	SWINGARM C400	
12	1	312871-99-1	DECAL HOOKBRACKET	
13	1	312872-99-2	DECAL HOOKBRACKET	
14	2		SLIDEBEAR25/28/35-22PDE-F *	
15	1	313067-28-2	WHEELFORK C400	
16	1	313066-28-1	WHEELFORK C400	
17	2	305390-99-0	WASH 8.5x23x3 fzb	
18	2	602124-99-0	BOLT M6S 8x 16 fzb ESL	
19	2	601068-00-0	PLAST PLUG SFL 35	
20	2	1822969	WHEEL 200x50 SOLID 3-SPOK	
21	1	1823029	TIRE 200x50 REAR SOLID	
22	1		RIM, 200x50	
23	2	600752-99-0	BALL BEAR 6002-2RS1	
24	1	1822963	CHASSIE C400	THE BREAK RELEASE, PAGE 10, BELONGS TO T..
25	1		CHASSIE	
26	1	313831-00-2	BATTERYBOX LID C400	
27	1		PLATE, LEFT	
28	1		COVER BATTERY LID, LEFT	
29	2	1824328	BATTERY GUARD (RUBBER)	
30	2	601871-00-0	STAR HANDLE WN 795 6x15	
31	2	600238-99-0	WASH BRB 6.4x12x1.5 fzb	
32	2	602788-99-0	LOCK WASH S-LOCK 5x12 fzb	
33	2	603061-99-0	NUT FLAT CLIP NUT956 M6	
34	4	600225-99-0	LOCK NUT M4 FZB	
35	8	601296-99-0	WASH BRB 4.3x 9x0.8 fzb	
36	4	601102-99-0	BOLT K6S 4x12 fzb	
37	8	1825197	COVER FRONT LIGHTS X850	
38	2		STICKER	
39	1		COVER BATTERY LID, RIGHT	
40	1		PLATE, RIGHT	
41	1	313833-00-1	BATTERYBOX LID C400	
42	1		PLATE	
43	2	601366-99-0	BOLT K6S 4x 6 fzb	
44	2	601296-99-0	WASH BRB 4.3x 9x0.8 fzb	
45	2	602192-99-0	BOLT MFX-Z 3x6 fzb	
46	2		GROMMET	
47	2	313841-00-0	PROTECT CABLE C400	
48	4	601158-99-0	QUICK MOUNT CLAMP	
49	2	602639-99-0	RUBBER BLOCK MN60 3018055	
50	2	601296-99-0	WASH BRB 4.3x 9x0.8 fzb	
51	2	602799-99-0	MUTTER LAS M6 HÖG fzb	
52	1	603061-99-0	NUT FLAT CLIP NUT956 M6	
53	1		STICKER, SERIAL NO. CHASSIE	
54	2	601187-99-0	BOLT K6S 4x10 fzb	
55	2	601296-99-0	WASH BRB 4.3x 9x0.8 fzb	
56	2		ANGLE	
57	2	313717-00-0	COVER BATTERYBOX C4,500	
58	2	309349-00-0	LIFT BELT BATTERY CH2k	
58	2	1820532	LIFT BELT BATTERY	
59	2	308938-99-0	BUSHING LINK CH2k	
60	2	600241-99-0	WASH BRB 10.5x20x2 fzb	
61	2	602027-99-0	BOLT M6S 10x100 fzb	
62	6		SCREW, ISO 7380 M5x6 fzb	
63	4	600237-99-0	WASH BRB 5.3x10x 1 fzb	
64	4	601161-99-0	BOLT M6S 5x10 fzb	
65	2		BOLT, ISO 4014 M6x40 fzb	
66	6	600238-99-0	WASH BRB 6.4x12x1.5 fzb	
67	4	602799-99-0	MUTTER LAS M6 HÖG fzb	
68	2		WASHER, ISO 7093-1 6,4x18x1,6 fzb	
69	2	602786-99-0	BOLT M6S 6x35	
70	1	1823605	SHOCK ABSORBER C400	Pair, for chairs manufactured before 2007-12-17
70	2	1823623	SHOCK ABSORBER C400	Each, for chairs manufactured after 2007-12-16
71	1		BRACKET, COVER LEFT	
72	1	312872-99-2	DECAL HOOKBRACKET	
73	1	1825160	SLEEWING BRACK LEFT C400	
74	1	313912-99-2	COVERPLATE DRIVE MOTOR	
75	1	313913-99-1	COVERPLATE DRIVE MOTOR	
76	1		BRACKET, COVER RIGHT	
77	1	312871-99-1	DECAL HOOKBRACKET	
78	1	1825159	SLEEWING BRACK RIGHT C400	
79	2		WASHER SRKB 11x35x3 fzb *	
80	1	612683-99-0	BOLT M6S 10x25 fzb ESL	
81	1	1825306	ARM MAIN SWITCH C400 C500	

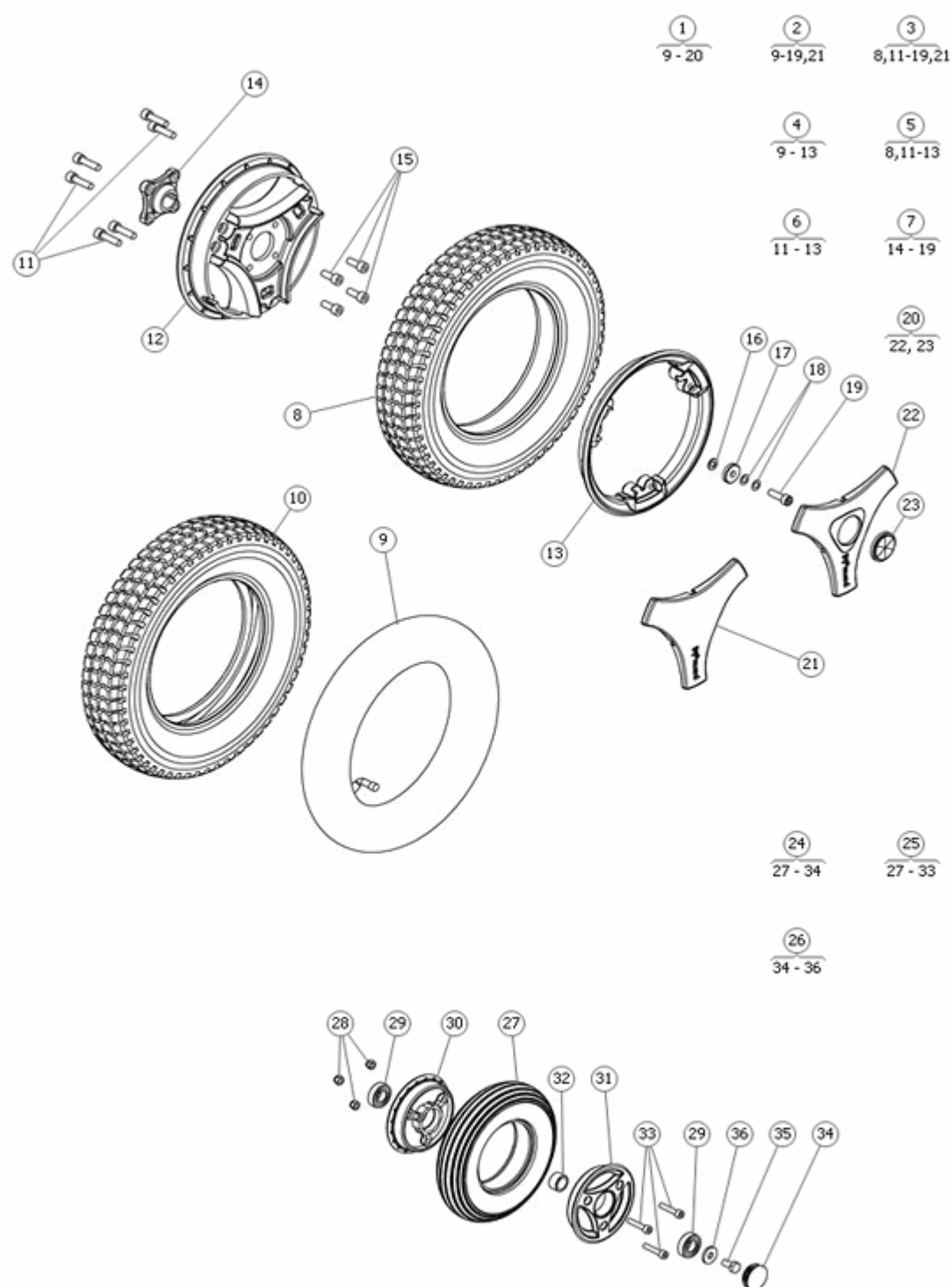
Pos	Qty	Stock Code	Description	Remark
82	1		ARM	FOR CHASSIES EQUIPPED WITH P+ ELECTRONI...
83	1	601823-00-0	PLAST KNOB RECT 4x16x30	FOR CHASSIES EQUIPPED WITH P+ ELECTRONI...
84	1		SPACER	FOR CHASSIES EQUIPPED WITH P+ ELECTRONI...
85	1	601381-99-0	BOLT K6S 4x 8 fzb	FOR CHASSIES EQUIPPED WITH P+ ELECTRONI...
86	1	1825109	FRICTION BRAKE KIT VER.3	Incl. bearings



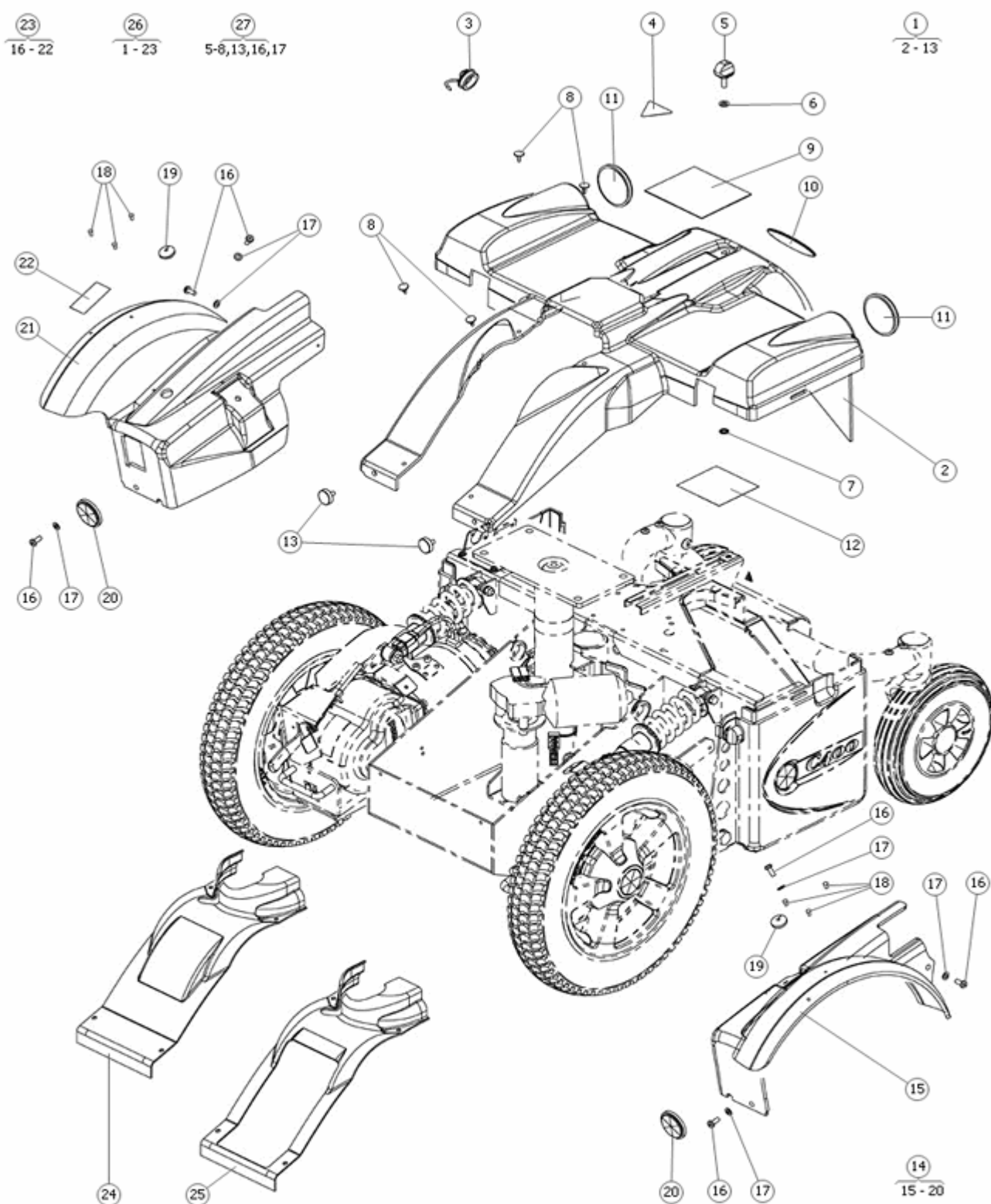
Pos	Qty	Stock Code	Description	Remark
1	1		DRIVING UNIT	
2	1		DRIVING UNIT	
3	2	308555-99-0	DRIVMOT/GEAR 25.8:1 V.2	
3	1	1822726	DRIV MOT/GEAR 7,5 KM/H RI	
3	1	1822727	DRIV MOT/GEAR 7,5 KM/H LE	
4	2	310257-99-0	MAGN W.LOCK DRIVEUNIT V.2	
5	2	307805-00-0	PLAST PLUG BRAKE KO	
6	2		BRAKE	
7	2	602109-00-0	RUBBER RING 69.57x1.78	
8	2	307789-99-0	BRAKE DISK CH2K CH8 KO	
9	2	307804-00-0	RUBBER PROTECT MAGNETIC	
10	2		HUB	SPLINES BUSHING
11	4	601976-99-0	PIN JST SLM	
12	2	601822-09-0	CONN BLOCK 2-PIN ELP	
13	2	601977-99-0	RECEPTACLE JST	
14	4	600189-99-0	BOLT MC6S 5x10 fzb	
15	2	306963-99-0	BRACK WIRE BRAKE REL V.3	
16	1	313653-28-0	SUPPORT WHEEL KIT C4,500	
17	1		BRACKET	
18	1		BRACKET	
19	2	600228-99-0	LOCK NUT M8 FZB	
20	4	601427-99-0	WASH BRB 8.4x15x1.6 fzb	
21	2		WHEEL R100/32-2 V SUPP- WHEELKIT CH2K CHHD EN CH	
22	2	602631-99-0	BOLT K6S 8x50 fzb	
23	6	601410-99-0	BOLT M6S 8x25 fzb	
24	6	600239-99-0	WASH BRB 8.4x16x1.6 fzb	
25	1	1823031	WHEEL 2.50x8 AIR ALU SPLI	
26	1	1821250	WASH 8.4x 15x 1,5 NYLON	
27	1	612513-99-0	BR 8.4x26x5 HB 305 GUL	
28	2	612531-99-0	SPACER DB 8x14x0,5	
29	1	612512-99-0	SKRUV MC6S 8x 25 fzb ESL	
30	1		STICKER	
31	1	603060-99-0	KEY RK 6x6x16 GEAR KO	
31	1	600855-99-0	KEY 6x6x22 DRIVE SHAFT	
32	1	1820306	SCREW KIT DRIVE WHEEL	
33	1		HUB CAP	
34	1	309351-19-0	RIM 3.00-8" FRONT CH2k KO	
35	1	602229-99-0	TUBE 2.50- 8 FRONT KO EN	
36	1	602228-08-0	TIRE 2.50- 8 FRONT KO EN	
37	1	309351-19-0	RIM 3.00-8" FRONT CH2k KO	



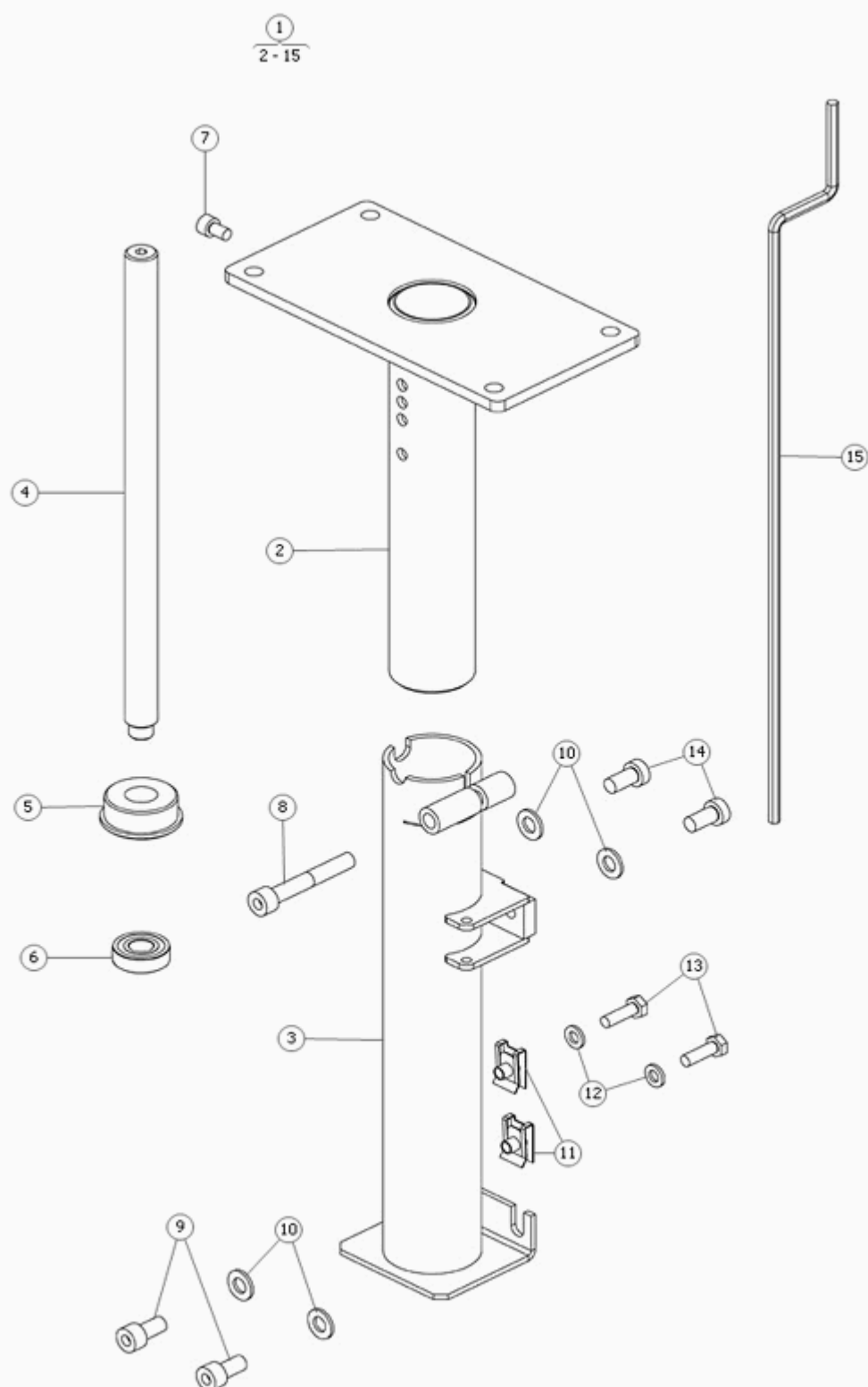
Pos	Qty	Stock Code	Description	Remark
1	1		BRAKE RELEASE, TWO GRIP.	BELONGS TO STOCK CODE NUMBER 313336.
2	1		PLATE	
3	1	601706-99-0	BOLT K6S 5x40 fzb	
4	2	600237-99-0	WASH BRB 5.3x10x 1 fzb	
5	1		SPACER	
6	1	600226-99-0	LOCK NUT M5 FZB	
7	1	601823-00-0	PLAST KNOB RECT 4x16x30	
8	1		ARM	
9	1	601187-99-0	BOLT K6S 4x10 fzb	
10	1	600829-99-0	WASH BRB 4.3x12x 1 fzb	
11	1		SPACER, 4,3x7x2,3 PA 6	
12	1		LOCK	
13	1	600231-99-0	NUT M6M 4 fzb	
14	1	603083-99-0	SCHACKLE SL 05 BRAKE REL	
15	1		COTTER	
16	1		WIRE, L=220	
17	4		SOLDERED NIPPLE, Ø5	
18	2		ADJUSTING SCREW, M5x0,8	
19	2		SOCKET, Ø6x5,3x3	
20	2		SOCKET, Ø6,5x0,6, Ø4x0,75	
21	2		SPRING, TF 1x7x65	
22	2	602107-99-0	SPRING 1.2x 8x 30	
23	1	308995-99-0	WIRE 935 BRAKE REL CH2k	
24	2	601388-99-0	BOLT MF6S 5x12 fzb	



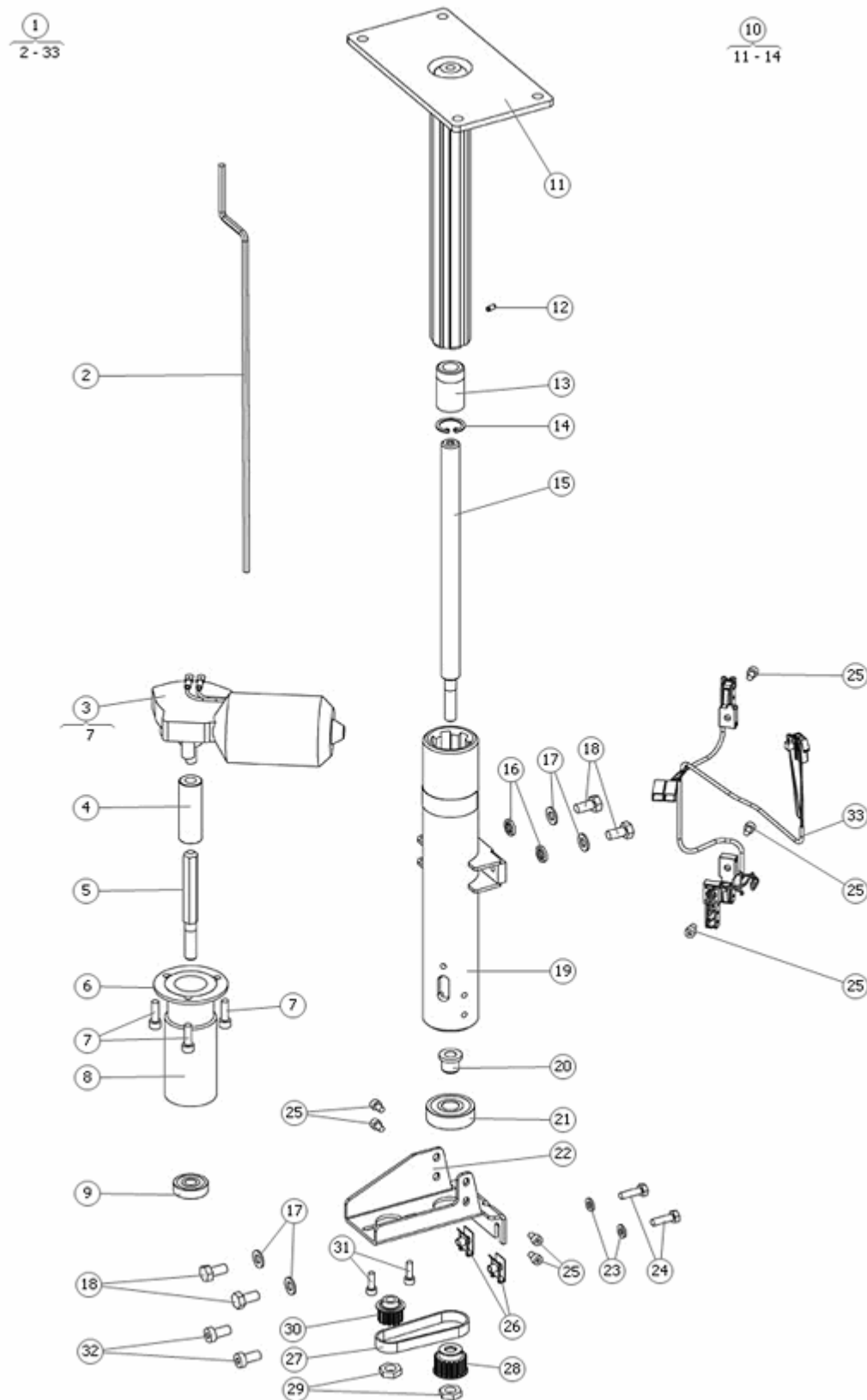
Pos	Qty	Stock Code	Description	Remark
1	1	1823031	WHEEL 2.50x8 AIR ALU SPLI	Silver colored hub cap and reflector.
2	1	1824053	WHEEL 2.50x8 US AIR ALU S	Silver colored hub cap.
3	1	1822980	WHEEL 2.50- 8" US SOLID	Silver colored hub cap.
4	1	1825253	WHEEL 2.50x8 AIR TRI SPOK	
5	1	1822979	WHEEL 2.50- 8" SOLID ALU	
6	0	1822232	RIM 1.5x8" 3-SPOKE	
7	1	1822435	HUB DRIVE MOTOR	
8	1	1822983	TIRE 2.50- 8" SOLID SPLIT	FOR SPLIT RIM ONLY
9	1	602229-99-0	TUBE 2.50- 8 FRONT KO EN	
10	1	602228-08-0	TIRE 2.50- 8 FRONT KO EN	
11	6	600880-99-0	BOLT MC6S 8x 30 fzb	
12	1		RIM INNER	
13	1		RIM OUTER	
14	1		HUB	
15	4	600203-99-0	BOLT MC6S 8x 20 fzb	
16	1	1821250	WASH 8,4x 15x 1,5 NYLON	
17	1	612513-99-0	BR 8.4x26x5 HB 305 GUL	
18	2	612531-99-0	SPACER DB 8x14x0,5	
19	1	612512-99-0	SKRUV MC6S 8x 25 fzb ESL	
20	1	1822231	HUB CAP BLACK ONYX	Black onyx
20	1	1822263	HUB CAP RED 3-SPOKE	Red
20	1	1822264	HUB CAP BLUE 3-SPOKE	Blue
20	1	1822265	HUB CAP BLACK MET 3-SPOKE	Black metallic
20	1	1822266	HUB CAP SILVER 3-SPOKE	Silver
20	1	1822267	HUB CAP YELLOW 3-SPOKE	Yellow
20	1	1823036	HUB CAP GREEN METALLIC 3-	Green metallic
20	1	1823037	HUB CAP PINK 3-SPOKE	Pink
20	1	1823038	HUB CAP TITAN BLUE	Titan blue
21	1		HUB CAP	
22	1		HUB CAP PLASTIC	
23	0	1820324	REFLECTOR SIDE STR EN	
24	0	1822969	WHEEL 200x50 SOLID 3-SPOK	
25	0		WHEEL 200x50 SOLID 3-SPOK	
26	0	1825083	BOLT KIT WHEEL FRONT STR,	
27	0	1823029	TIRE 200x50 REAR SOLID	
28	0	1821261	LOCK NUT M6 HIGH fzb	
29	0	600752-99-0	BALL BEAR 6002-2RS1	
30	0		RIM INNER 200x50	
31	0		RIM OUTER 200x50	
32	0		SPACER	
33	0	600196-99-0	BOLT MC6S 6x30 fzb	
34	0	601068-00-0	PLAST PLUG SFL 35	
35	0	602124-99-0	BOLT M6S 8x 16 fzb ESL	
36	0	305390-99-0	WASH 8.5x23x3 fzb	



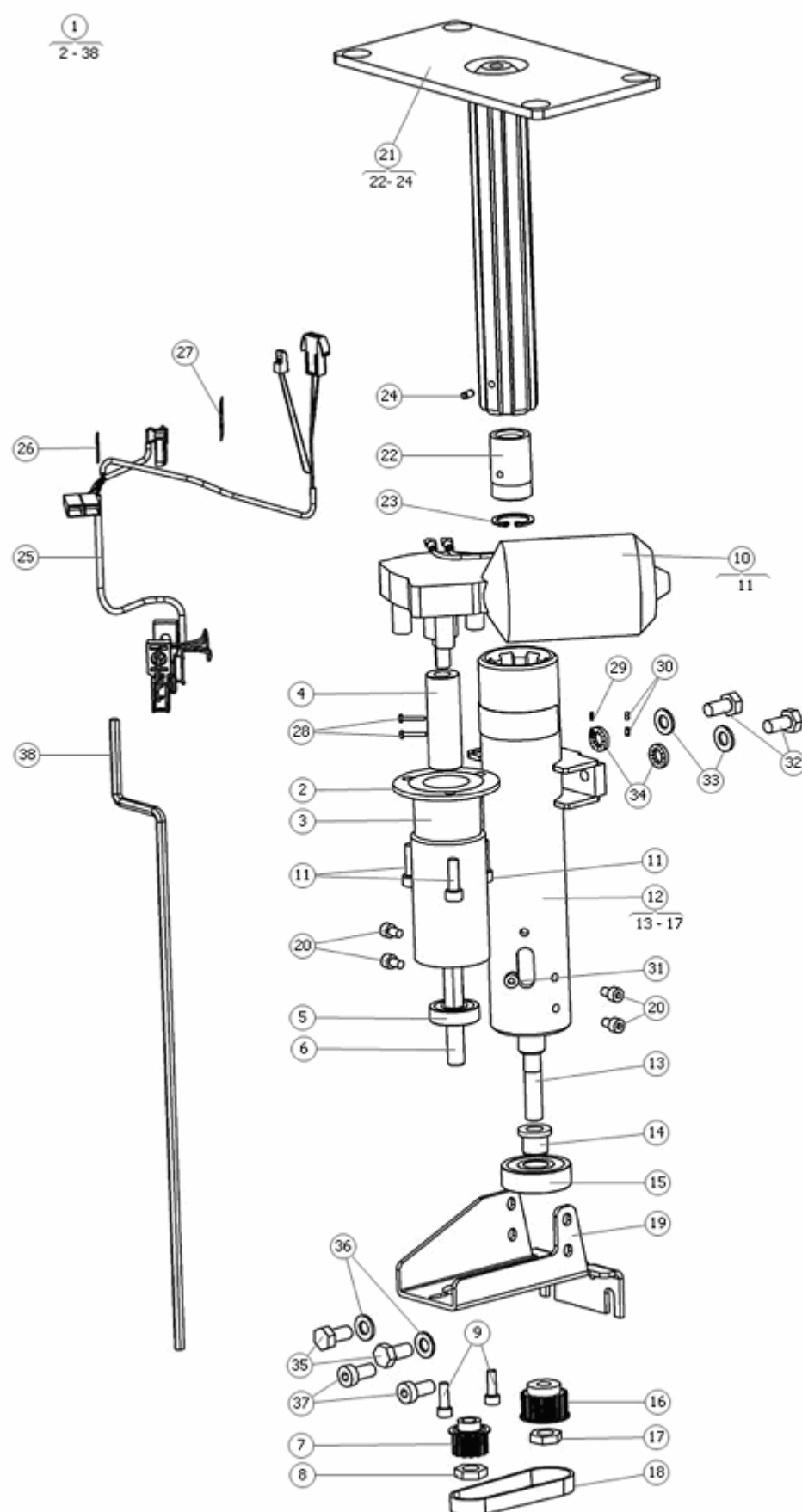
Pos	Qty	Stock Code	Description	Remark
1	1	313981-12-0	COVER REAR INCL REFL C400	RED METALLIC
1	1	1824211	COVER GREEN MET INCL	DARK GREEN METALLIC
1	1	313981-39-0	COVER REAR INCL REFL C400	CARBON FIBRE/SILVER
1	1	313981-46-0	COVER REAR INCL REFL C400	DARK BLUE METALLIC
1	1	1824213	COVER BLACK MET INCL	BLACK METALLIC
1	1	1824211	COVER GREEN MET INCL	DARK GREEN METALLIC
2	1		COVER, REAR	RED METALLIC
2	1		COVER, REAR	DARK GREEN METALLIC
2	1		COVER, REAR	CARBON FIBRE/SILVER
2	1		COVER, REAR	DARK BLUE METALLIC
2	1		COVER, REAR	BLACK METALLIC
3	1	313622-00-0	COVER CHARGE CONN C4,500	
3	1	1824407	PROTECTION COVER	REKTANGULAR LID WITH BOLT AND NUTS
4	1	1823073	DECAL SET C400	Set incl all stickers for cover mount
4	1	313891-99-0	DECAL SEAT TILT WARNING	
5	1	601871-00-0	STAR HANDLE WN 795 6x15	
6	1	600238-99-0	WASH BRB 6.4x12x1.5 fzb	
7	1	602788-99-0	LOCK WASH S-LOCK 5x12 fzb	
8	4	601158-99-0	QUICK MOUNT CLAMP	
9	1	306601-99-0	DECAL WARNING RADIO WAVES	
9	1	1823073	DECAL SET C400	Set incl all stickers for cover mount
10	1	306200-99-0	DEKAL "PERMOBIL"	
10	1	1823073	DECAL SET C400	Set incl all stickers for cover mount
11	2	602567-99-0	REFLECTOR REAR CH2k	
12	1	1823073	DECAL SET C400	Set incl all stickers for cover mount
13	2	602391-99-0	STAR HANDLE 71-020 M5x12	
14	1		COVER, ASSEMBLY REFLECTOR FRONT LEFT	RED METALLIC
14	1		COVER, ASSEMBLY REFLECTOR FRONT LEFT	DARK GREEN METALLIC
14	1		COVER, ASSEMBLY REFLECTOR FRONT LEFT	CARBON FIBRE/SILVER
14	1		COVER, ASSEMBLY REFLECTOR FRONT LEFT	DARK BLUE METALLIC
14	1		COVER, ASSEMBLY REFLECTOR FRONT LEFT	BLACK METALLIC
15	1	314003-12-2	FENDER FRONT C400	RED METALLIC
15	1	1824211	COVER GREEN MET INCL	DARK GREEN METALLIC
15	1	314003-39-2	FENDER FRONT C400	CARBON FIBRE/SILVER
15	1		COVER, FRONT LEFT	DARK BLUE METALLIC
15	1	314003-50-2	FENDER FRONT C400	BLACK METALLIC
15	1	1824212	COVERSET INCL REFL C400	DARK BLUE METALLIC
16	6	601159-99-0	BOLT K6S 5x12 fzb	
17	6	600237-99-0	WASH BRB 5.3x10x 1 fzb	
18	2	601753-00-0	PLAST PLUG 93-02	
19	2	310159-00-0	CABLE GROMMET FRONTFENDER	
20	2	1821088	REFLECTOR Ø 40 FRONT	
20	2	1820314	REFLECTOR FRONT WHITE STR	
21	1	1824210	COVER RED MET INCL	RED METALLIC
21	1	314004-39-1	FENDER FRONT C400	CARBON FIBRE/SILVER
21	1	314004-46-1	FENDER FRONT C400	DARK BLUE METALLIC
21	1	314004-50-1	FENDER FRONT C400	BLACK METALLIC
21	1	1824211	COVER GREEN MET INCL	DARK GREEN METALLIC
22	1	1823073	DECAL SET C400	Set incl all stickers for cover mount
23	1		COVER, ASSEMBLY REFLECTOR FRONT RIGHT	RED METALLIC
23	1		COVER, ASSEMBLY REFLECTOR FRONT RIGHT	DARK GREEN METALLIC
23	1		COVER, ASSEMBLY REFLECTOR FRONT RIGHT	CARBON FIBRE/SILVER
23	1		COVER, ASSEMBLY REFLECTOR FRONT RIGHT	DARK BLUE METALLIC
23	1		COVER, ASSEMBLY REFLECTOR FRONT RIGHT	BLACK METALLIC
24	1	313887-00-0	PROTECT HOUSE S.ELEV C400	
24	1	1822209	COVER SEAT ELEV PILLAR	INCL CLIPS
25	1	313901-00-0	PROTECT HOUSE SEAT ELEV	
26	1	1824210	COVER RED MET INCL	RED METALLIC
26	1	1824211	COVER GREEN MET INCL	DARK GREEN METALLIC
26	1		COVERS KIT, REFLECTOR	CARBON FIBRE/SILVER
26	1	1824212	COVERSET INCL REFL C400	DARK BLUE METALLIC
26	1	1824213	COVER BLACK MET INCL	BLACK METALLIC
27	1	1824894	HARDWARE KIT COVERS	



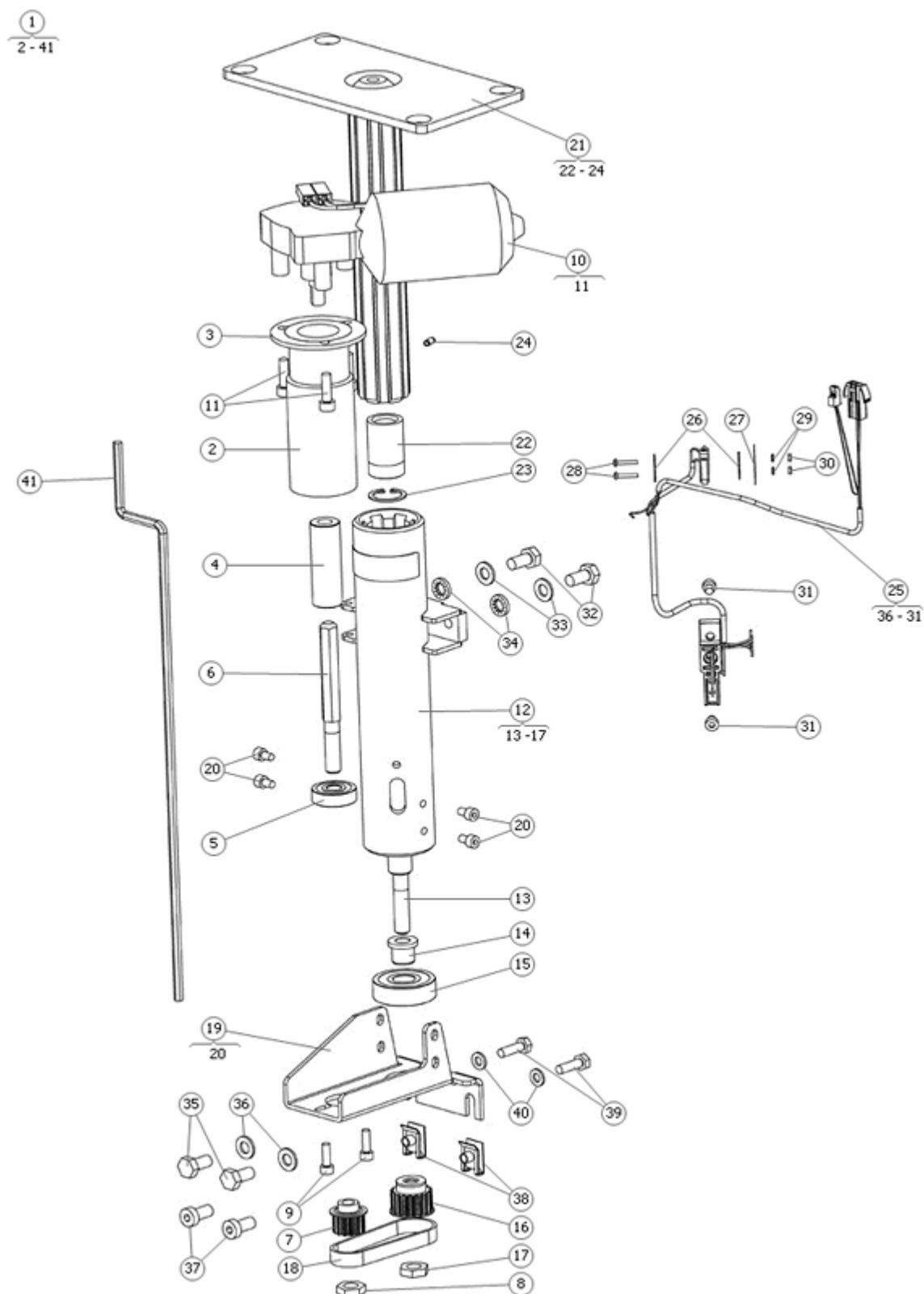
Pos	Qty	Stock Code	Description	Remark
1	1	1821778	SEAT TUBE FIXED C4,500	
1	1	308732-99-0	SEATUBE FIXED CH CH2k	
2	1		INNER TUBE	
3	1		OUTER TUBE	
4	1		SCREW SEAT TUBE FIXED	
5	1		BUSH SEAT TUBE FIXED	
6	1	600037-99-0	BALL BEAR 6001-2RS1	
7	1	600888-99-0	BOLT MC6S 6x10 fzb	
8	1	601157-99-0	BOLT MC6S 8x 55 fzb	
9	2	600590-99-0	BOLT MC6S 8x 16 fzb	
10	4	600239-99-0	WASH BRB 8.4x16x1.6 fzb	
11	2	603061-99-0	NUT FLAT CLIP NUT956 M6	
12	2	600238-99-0	WASH BRB 6.4x12x1.5 fzb	
13	2	600222-99-0	BOLT M6S 6x20 fzb	
14	2		SCREW, DIN 7984 M8x16 fzb	
15	1	303668-99-0	SEAT ELEV KEY	



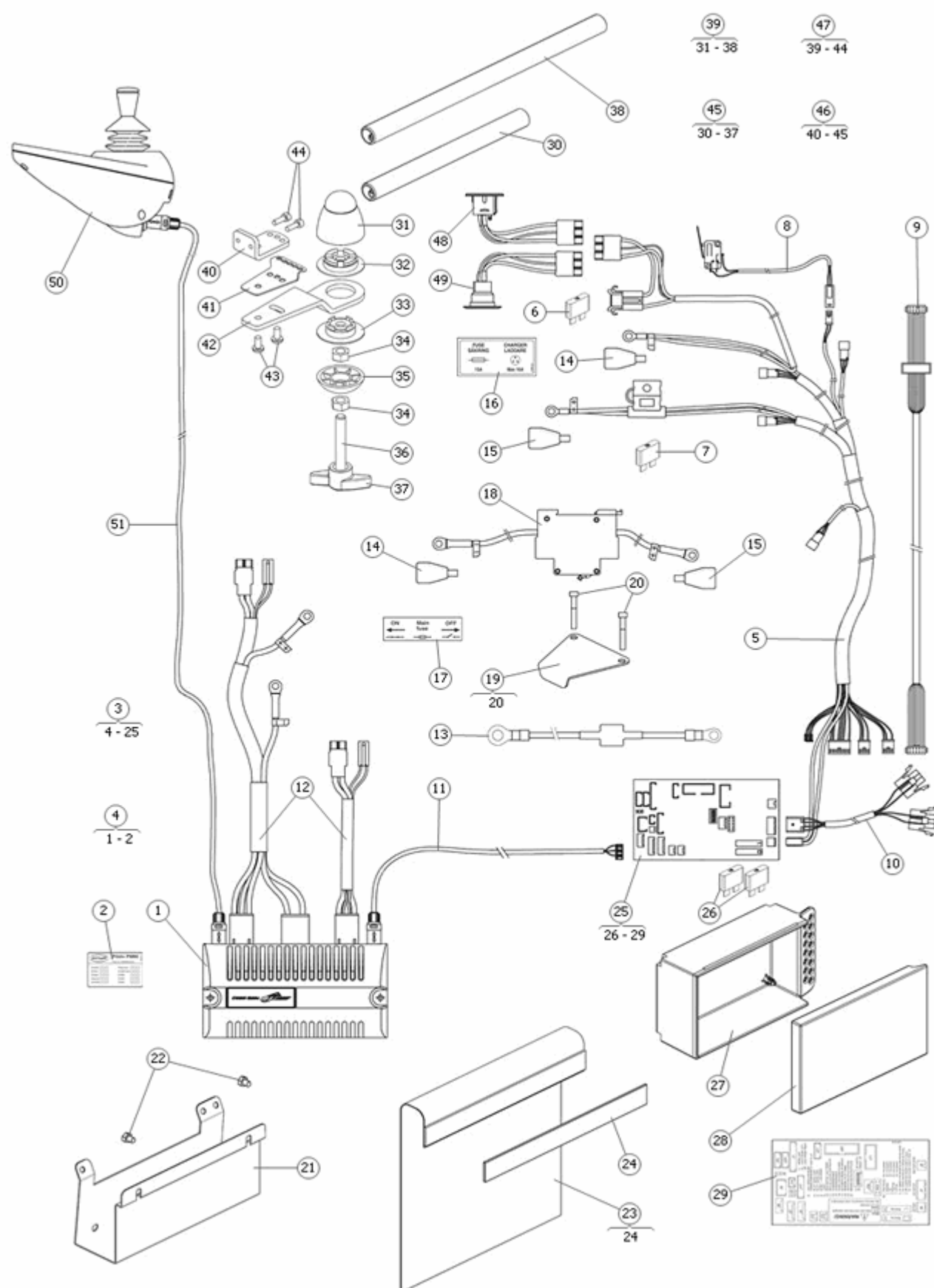
Pos	Qty	Stock Code	Description	Remark
1	1	312402-99-0	SEAT ELEV CH CHP+ CH2K	STD V.3
2	1	303668-99-0	SEAT ELEV KEY	
3	1	1820425	MOTOR SEAT ELEVATOR C300	
4	1	309087-99-0	PLASTIC SLEEVE SEAT ELEV	
5	1		SCREW	
6	1		PLATE	
7	3	600194-99-0	BOLT MC6S 6x20 fzb	
8	1		SOCKET	
9	1	601471-99-0	BALL BEAR 6200-1RS1	
10	1	302280-99-0	INNER TUBE SEAT ELEV V.2	
11	1		INNER TUBE	
12	1		SPRING PIN ISO 8750 4x8	
13	1		NUT	
14	1		CIRCLIP, DIN 472 Ø24	
15	1		SCREW	
16	2	601173-99-0	WASH IZ 8.4x15 fzb	
17	4	600239-99-0	WASH BRB 8.4x16x1.6 fzb	
18	4	602124-99-0	BOLT M6S 8x 16 fzb ESL	
19	1		OUTER TUBE	
20	1		SOCKET	
21	1	600709-99-0	BALL BEAR 6302-2RS1	
22	1		BRACKET	
23	2	600238-99-0	WASH BRB 6.4x12x1.5 fzb	
24	2	600222-99-0	BOLT M6S 6x20 fzb	
25	7	600188-99-0	BOLT MC6S 5x 8 fzb	
26	2	603061-99-0	NUT FLAT CLIP NUT956 M6	
27	1	600892-99-0	DRIVE SEAT ELEV	
28	1		TIMING BELT PULLEY	
29	2	601855-99-0	NUT ML6M 10 fzb	
30	1		TIMING BELT PULLEY	
31	2	601165-99-0	BOLT MC6S 5x16 fzb	
32	2		SCREW, DIN 7984 M8x16 fzb	
33	1	311195-99-0	CABLE SEAT ELEV P+	



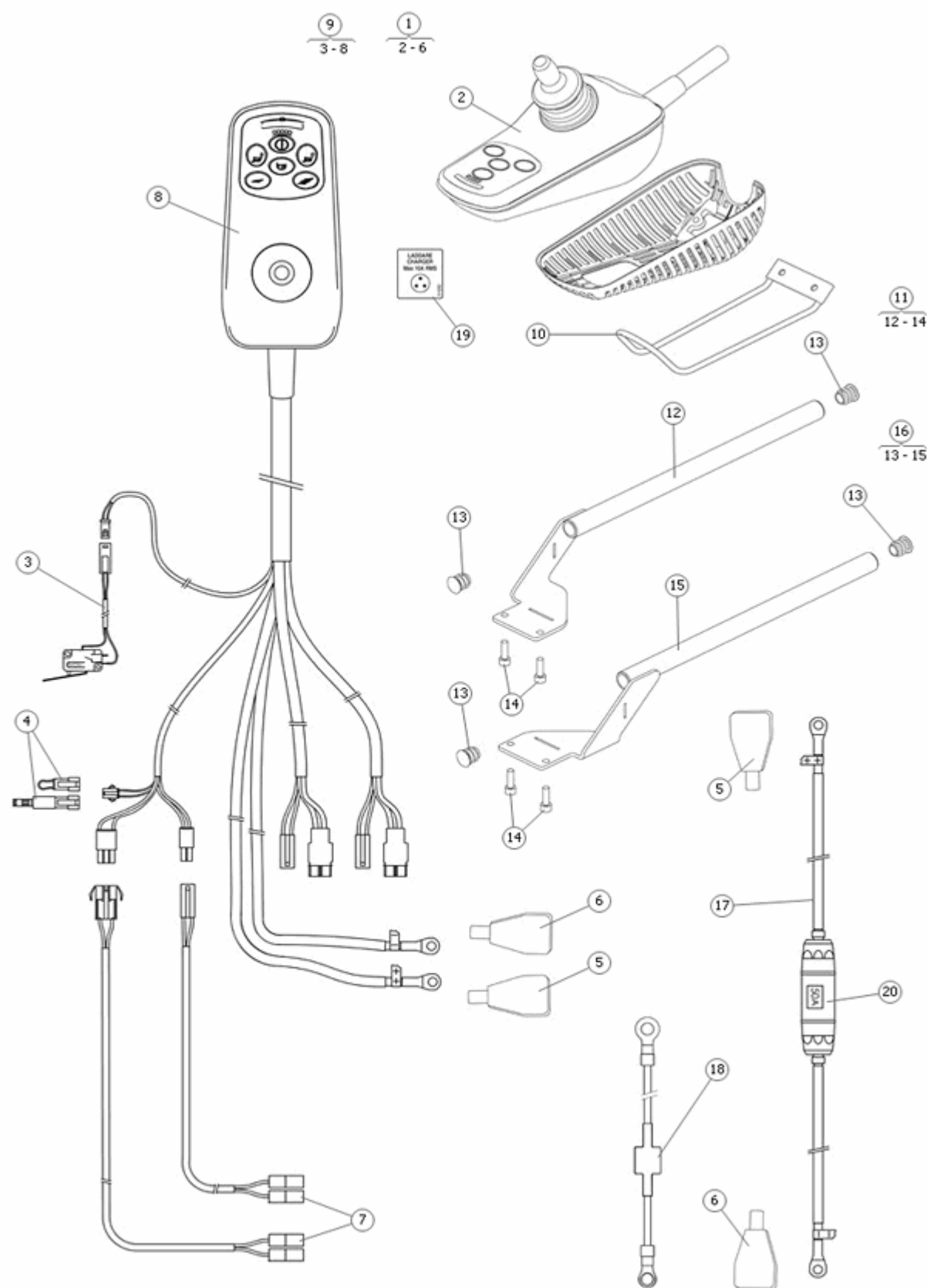
Pos	Qty	Stock Code	Description	Remark
1	1	312528-99-0	SEATELEV -60 V.2 CH2k	
2	1		PLATE	
3	1		SOCKET	
4	1	309087-99-0	PLASTIC SLEEVE SEAT ELEV	
5	1	601471-99-0	BALL BEAR 6200-1RS1	
6	1		SCREW MOTOR SHAFT	
7	1		WHEEL	
8	1	601855-99-0	NUT ML6M 10 fzb	
9	2	601165-99-0	BOLT MC6S 5x16 fzb	
10	1	1820425	MOTOR SEAT ELEVATOR C300	
11	3	600194-99-0	BOLT MC6S 6x20 fzb	ISO 4762 M6x20 fzb
12	1		OUTER TUBE	
13	1		SCREW SEATELEVATOR	
14	1		SOCKET	
15	1	600709-99-0	BALL BEAR 6302-2RS1	
16	1		WHEEL	
17	1	601855-99-0	NUT ML6M 10 fzb	
18	1	600892-99-0	DRIVEB SEAT ELEV	
19	1		BRACKET	
20	4	600188-99-0	BOLT MC6S 5x 8 fzb	
21	1	311201-99-0	INNER TUBE SEAT ELEV -60	
22	1		NUT	
23	1		CIRCLIP INTERNAL DIN 472 Ø24	
24	1		SPRING PIN ISO 8750 4x8	
25	1	1824725	CABLE SEAT ELEV. -50.-60	
26	1		WASH 6x18x0.7 M.SWITCH	
27	1		WASHER ISOLATION	
28	2	602560-99-0	BOLT MRX-H 2.3x14 fzb	
29	2	601321-99-0	WASH AZ 2.5x5x0.4 fzb	
30	2	600594-99-0	NUT M6M 2.3 fzb	
31	2	600188-99-0	BOLT MC6S 5x 8 fzb	
32	2	602124-99-0	BOLT M6S 8x 16 fzb ESL	
33	2	600239-99-0	WASH BRB 8.4x16x1.6 fzb	
34	2	601173-99-0	WASH IZ 8.4x15 fzb	
35	2	602124-99-0	BOLT M6S 8x 16 fzb ESL	
36	2	600239-99-0	WASH BRB 8.4x16x1.6 fzb	
37	2		SCREW, DIN 7984 M8x16 fzb	
38	1	303668-99-0	SEAT ELEV KEY	



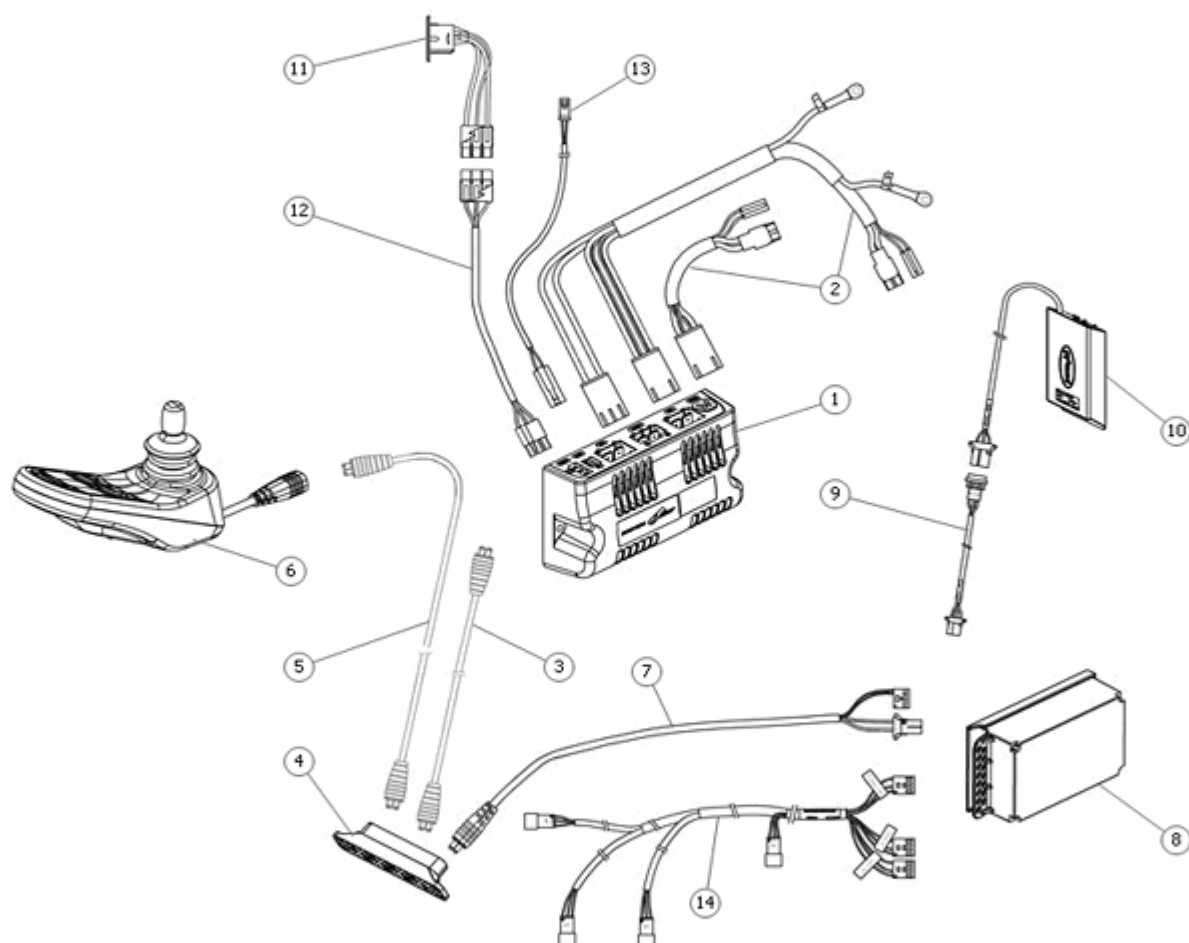
Pos	Qty	Stock Code	Description	Remark
1	1	312525-99-0	SEAT ELEV -50 V.3 EN CH	
2	1		SOCKET MOTOR SEAT ELEVATOR	
3	1		PLATE	
4	1	309087-99-0	PLASTIC SLEEVE SEAT ELEV	
5	1	601471-99-0	BALL BEAR 6200-1RS1	10x30x9
6	1		SCREW SEAT ELEVATOR	
7	1		WHEEL SEAT ELEVATOR	
8	1	601855-99-0	NUT ML6M 10 fzb	
9	2	601165-99-0	BOLT MC6S 5x16 fzb	
10	1	1820425	MOTOR SEAT ELEVATOR C300	
11	3	600194-99-0	BOLT MC6S 6x20 fzb	
12	1		OUTER TUBE -50 V3	
13	1		SCREW SEAT ELEVATOR -50 V3	
14	1		SOCKET SEAT ELEVATOR	
15	1	600709-99-0	BALL BEAR 6302-2RS1	15x42x13
16	1		WHEEL SEAT ELEVATOR	
17	1	601855-99-0	NUT ML6M 10 fzb	
18	1	600892-99-0	DRIVEB SEAT ELEV	
19	1		BRACKET BOTTOM	
20	4	600188-99-0	BOLT MC6S 5x 8 fzb	
21	1	305106-99-0	INNER TUBE SEAT ELEV -50	
22	1		NUT SEAT ELEVATOR	
23	1		CIRCLIP INTERNAL DIN 472 Ø24	
24	1		SPRING PIN ISO 8750 4x8	
25	1	311195-99-0	CABLE SEAT ELEV P+	
26	2		WASH 6x18x0.7 M.SWITCH	
27	1		WASHER ISOLATION	
28	2	602560-99-0	BOLT MRX-H 2.3x14 fzb	
29	2	601321-99-0	WASH AZ 2.5x5x0.4 fzb	DIN 6798A 2,5mm fzb
30	2	600594-99-0	NUT M6M 2.3 fzb	DIN 934 M2,3 fzb
31	2	600188-99-0	BOLT MC6S 5x 8 fzb	
32	2	602124-99-0	BOLT M6S 8x 16 fzb ESL	ISO 4017 M8x16 fzb
33	2	600239-99-0	WASH BRB 8.4x16x1.6 fzb	
34	2	601173-99-0	WASH IZ 8.4x15 fzb	
35	2	602124-99-0	BOLT M6S 8x 16 fzb ESL	
36	2	600239-99-0	WASH BRB 8.4x16x1.6 fzb	
37	2		SCREW, DIN 7984 M8x16 fzb	
38	2	603061-99-0	NUT FLAT CLIP NUT956 M6	
39	2	600222-99-0	BOLT M6S 6x20 fzb	
40	2	600238-99-0	WASH BRB 6.4x12x1.5 fzb	
41	1	303668-99-0	SEAT ELEV KEY	



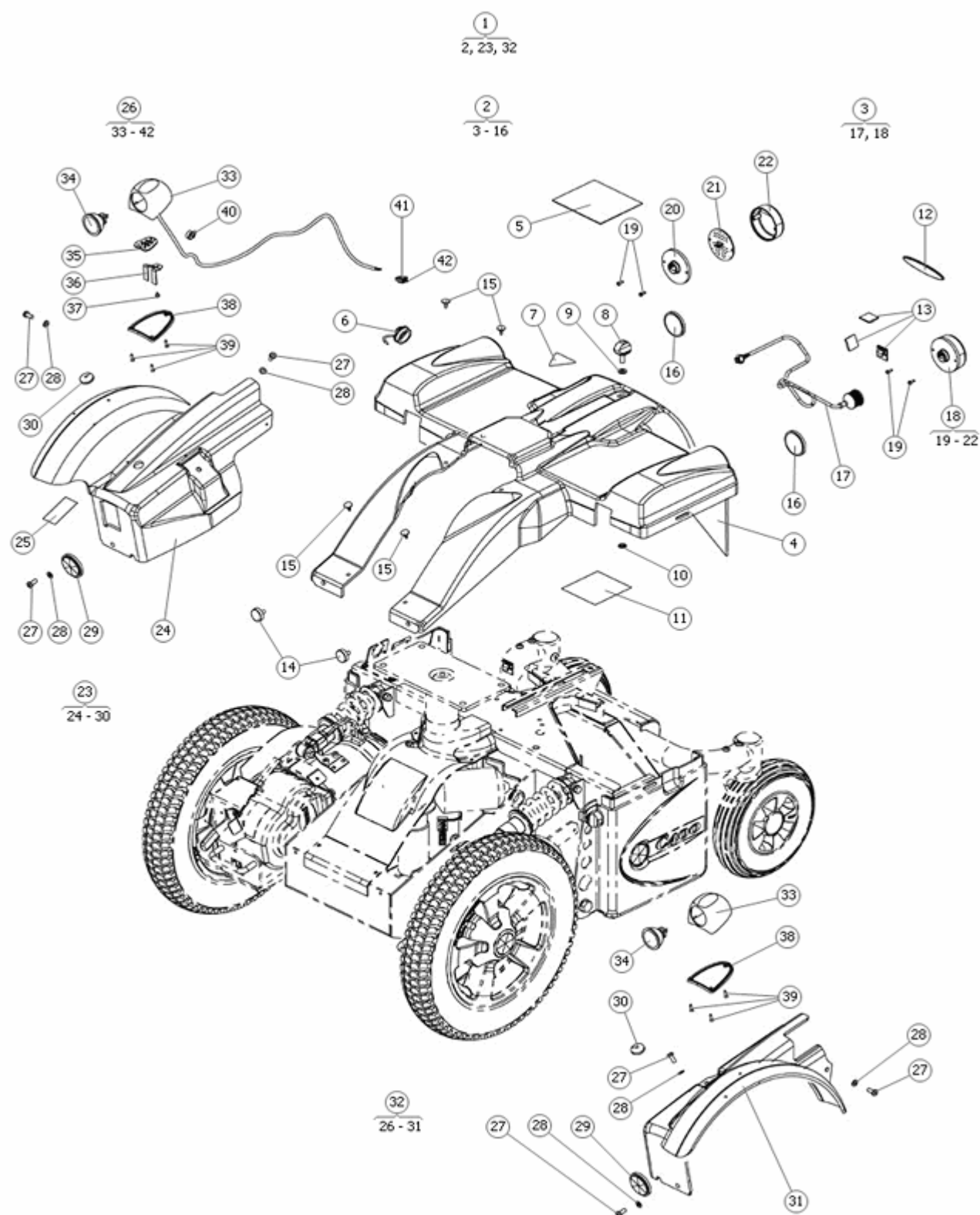
Pos	Qty	Stock Code	Description	Remark
1	1		ELECTRONICS, PM80	
2	1		STICKER, PM80	
3	1		POWER MOUNT.	
4	1	309393-00-0	ELECTRONICS PILOT+ CH2k	
4	1		Pilot+ Power Module, 80A (Direct)	
5	1	311063-00-0	CABL CHARG/LIGHTS C4,500	For wheel chairs equipped with SLS
5	1	1821785	CABL CHARG/LIGHTS P+ ICS	For wheel chairs equipped with ICS
6	1	601089-99-0	FUSE PLUG 15 A	15 A, BLADE STD.
7	1		FUSE PLUG 20 A	20 A, BLADE STD.
8	1	311347-00-0	CABLE BRAKE RELEASE C4,	
9	1	305547-00-0	CABLE SW.BOX CH2K	
10	1	309083-00-0	CABLE 24V OUTLET SLS+	
11	1	309082-00-0	CABL ELECTRONIC P+ - SLS	
12	1	309084-00-0	CABLE LOWER CH2k	
13	2		CABLE CONNECT CHASSI CH2k *	
14	2	602735-00-0	COVER POLE SHOE- 4251 TR	
15	2	602734-02-0	COVER POLE SHOE+ 4252 TR	
16	1	1823073	DECAL SET C400	Set incl all stickers for cover mount
17	1	308642-99-0	DECAL MAIN.FUSE TR	
17	1	1823073	DECAL SET C400	Set incl all stickers for cover mount
18	1	309085-00-0	CABLE MAINFUSE CH2k	
19	1	1821069	BRACKET FUSE	
20	2	600767-99-0	BOLT MC6S 5x35 DIN 912	
21	2	308932-99-0	BRACK ELECTRONIC CH2k	
22	4		BOLT M6S 5*6 fzb ISO4014	
23	2	1825309	PROTECT ELECTRONIC INCL	
24	400		VELCRO TAPE	20mm ADHESIVE HOOK BLACK
25	1	310417-99-0	PCB SLS+ V.2 INCL CASE	
26	2	601089-99-0	FUSE PLUG 15 A	15 A, BLADE STD.
27	1		BOX	
28	1		LID	
29	1	310418-99-0	DECAL CASE PCB SLS+ V.2	
30	1		TUBE, L=335	
31	1		HINGE, UPPER	
32	1		LOCK WASHER, INNER	
33	1		LOCK WASHER, OUTER	
34	2	600228-99-0	LOCK NUT M8 FZB	
35	1		CONCAVE WASHER	
36	1		SCREW, ISO 4029 M8x60 A2	
37	1		LOCK HANDLE	
38	1		TUBE, L=435	
39	1		HINGE, PANELHOLDER L=435	
40	1		BRACKET	
41	1	1825189	PLATE PANELHOLDER P+, PG8	
42	1		PLATE, PANELHOLDER	
43	2	601353-99-0	BOLT K6S 5x10 fzb	
44	2	600184-99-0	BOLT MC6S 4x12 fzb	
45	1		HINGE, PANELHOLDER L=335	
46	1	308985-99-0	PANEL HOLD 335 HI P+	
47	1	310045-99-0	PANEL HOLD 435 HI P+	
48	1	311217-99-0	REPAIR KIT CHARGER CONN	
49	1	102226-99-0	CHARGER CONNECTOR XLR	
49	1	311060-00-0	CHARGER CONNECTOR XLR USA	US ADDED
50	1	309391-00-0	CTRL PANEL PILOT+ PG	
51	1		CABLE UPPER PILOT+ CH2k KO EN CHHD CHP+	



Pos	Qty	Stock Code	Description	Remark
1	1		POWER MOUNT, BASIC	
2	1	612698-00-0	ELECTRONICS VSI BASIC	VSI 50-24-OBC
3	1	311347-00-0	CABLE BRAKE RELEASE C4,	
4	1	311354-00-0	CABLE ADAPTER HALFSPEED	
5	2		COVER POLE SHOE +	
5	2	602734-02-0	COVER POLE SHOE+ 4252 TR	
6	2	602735-00-0	COVER POLE SHOE- 4251 TR	
7	1		CABLING, TWO ACTUATORS	
8	1	612699-00-0	ELECTRONICS VSI ADVANCED	VSI 70-24-OBC-A2
9	1		POWER MOUNT, ADVANCED	
10	1		PROTECT, CONTROL PANEL	
11	1	1820439	PANEL HOLDER VSI RIGHT	
12	1		BRACKET, CONTROL PANEL RIGHT	
13	2		PLASTIC PLUG	
14	2	601165-99-0	BOLT MC6S 5x16 fzb	
15	1		BRACKET, CONTROL PANEL LEFT	
16	1	1820440	PANEL HOLDER VSI LEFT	
17	1	1821254	FUSE HOLDER 50A VSI	
18	2		CABLE, CONNECTON CHASSIS	
19	2	1824344	DECAL "CHARGER 10A"	
20	1	602052-99-0	FUSE GLASS 50 A	



Pos	Qty	Stock Code	Description	Remark
1	1	1821539	ELECTRONICS PM80 R-NET	
1	1		R-NET POWER MODULE 80A	USA ITEM
2	1	309084-00-0	CABLE LOWER CH2k	
3	1	1821538	CABLE BUS 0,5M R-NET	
3	1		R-NET BUS CABLE 0,5m	USA ITEM
4	1	1821537	CONNECTOR BLOCK 4-POS	
4	1		R-NET BUS 4 PORT BLOCK	USA ITEM
5	1	1821526	CABLE UPPER 2,5M R-NET	
5	1		R-NET BUS CABLE 2,5m	USA ITEM
6	1	1822389	CTRL PANEL R-NET JSM-L-SW	D51036
6	1	1822390	CTRL PANEL TOGGLE SWITCH	D51040
6	1		R-NET JSM STD L	USA ITEM
6	1		R-NET JSM L W/ TOGGLE	USA ITEM
6	1		R-NET JSM L W/ SPEED POT	USA ITEM
6	1		R-NET JSM SPD POT & TOGGL	USA ITEM
7	1	1822821	CABLE MAIN LIN R-NET	
8	1	1821535	PCB INCL BOX ICS MASTER	
9	1	1821533	BUS CABLE EXT 0,5M	
10	1	1821382	ELECTRONICS ICS SEAT	
11	1	311060-00-0	CHARGER CONNECTOR XLR USA	
12	1	1822823	CABLE OBC CHARGE R-NET	
13	1	1822370	CABLE BREAK RELEASE R-NET	
14	1	1822820	CABLE LIGHT ICS	



Pos	Qty	Stock Code	Description	Remark
1	1		COVER	
2	1		COVER, REAR	
3	2	309397-99-0	LIGHTS REAR CH2k	
4	1		COVER, REAR	
4	1		COVER, REAR	
4	1		COVER, REAR	
4	1		COVER, REAR	
4	1		COVER, REAR	
5	1	306601-99-0	DECAL WARNING RADIO WAVES	
5	1	1823073	DECAL SET C400	Set incl all stickers for cover mount
6	1	313622-00-0	COVER CHARGE CONN C4.500	
7	1	313891-99-0	DECAL SEAT TILT WARNING	
7	1	1823073	DECAL SET C400	Set incl all stickers for cover mount
8	1	601871-00-0	STAR HANDLE WN 795 6x15	
9	1	600238-99-0	WASH BRB 6.4x12x1.5 fzb	
10	1	602788-99-0	LOCK WASH S-LOCK 5x12 fzb	
11	1	1823073	DECAL SET C400	Set incl all stickers for cover mount
12	1	306200-99-0	DEKAL "PERMOBIL"	
12	1	1823073	DECAL SET C400	Set incl all stickers for cover mount
13	6	602615-99-0	CABLE TIE HOLD ACC19-A-C	
14	2	602391-99-0	STAR HANDLE 71-020 M5x12	
15	4	601158-99-0	QUICK MOUNT CLAMP	
16	2	1821057	REFLECTOR REAR Ø 40 RED	
17	1		CABLE, REAR LIGHT	
18	1	309397-99-0	LIGHTS REAR CH2k	
19	2	600772-99-0	BOLT RXS-Z ST 2.9x9.5 fzb	
20	1		GASKET, LIGHTS REAR	
21	1		PCB, LIGHTS REAR	
22	1		GLASS, LIGHTS REAR	
23	1		COVER, FRONT	
24	1	314004-12-1	FENDER FRONT C400	
24	1	1824211	COVER GREEN MET INCL	GREEN METALLIC
24	1	314004-39-1	FENDER FRONT C400	
24	1	314004-46-1	FENDER FRONT C400	
24	1	314004-50-1	FENDER FRONT C400	
24	1	1824211	COVER GREEN MET INCL	
25	1	1823073	DECAL SET C400	Set incl all stickers for cover mount
26	2	309396-00-0	HEADLIGHT INCL CABLE CH2k	
27	6	601159-99-0	BOLT K6S 5x12 fzb	
28	6	600237-99-0	WASH BRB 5.3x10x 1 fzb	
29	2	1821088	REFLECTOR Ø 40 FRONT	
29	2	1820314	REFLECTOR FRONT WHITE STR	
30	2	310159-00-0	CABLE GROMMET FRONTFENDER	
31	1	314003-12-2	FENDER FRONT C400	RED
31	1	1824211	COVER GREEN MET INCL	GREEN METALLIC
31	1	314003-39-2	FENDER FRONT C400	CARBON/SILVER
31	1		COVER, FRONT LEFT	DARK BLUE
31	1	314003-50-2	FENDER FRONT C400	BLACK METALLIC
31	1	1824212	COVERSET INCL REFL C400	DARK BLUE
32	1		COVER, FRONT LEFT	
33	3		LIGHTS, FRONT	
34	2	602380-99-0	BULB 24/5 HEADLIGHT TR EN	
35	2		PCB	
36	2		PLATE, LIGHTS	
37	2		SCREW, ISO 7049 ST 2.9x6.5 fzb	
38	2		GASKET, LIGHTS	
39	6		SCREW, ISO 7050 ST 2.9x13 fzb	
40	2	600136-00-0	CABLE TIE SST1M 2.4x102	
41	2		CONNECTOR HOUSING	
42	6		FEMALE TERMINAL	

When you order spare parts, the following must always be specified:

- The product model (for example, power wheelchair C300).
- The description of the part.
- always use the description used in this catalog.
- The entire part number.
- The quantity.

NB! In some cases, parts appear in the spare part catalog without a part number. This means that the part cannot be ordered from Permobil. We have, however, chosen to describe it for your information. Standard components such as screws, nuts, washers and similar parts can be purchased in an ordinary shop using the information in this catalog.

Description of Positioning list

The positioning list consist of:

A = Indicates the sparepart-group covered by the catalog.

B = Indicates part of the sparepart-group.

C = Under C there are five columns:

- 1** = Pos.no: Position number
- 2** = Pcs: Total number of given pos-no.
- 3** = Part no.: Part number
- 4** = Description: Article name
- 5** = Remark: Reserved for additional information such as reservations, restrictions etc.

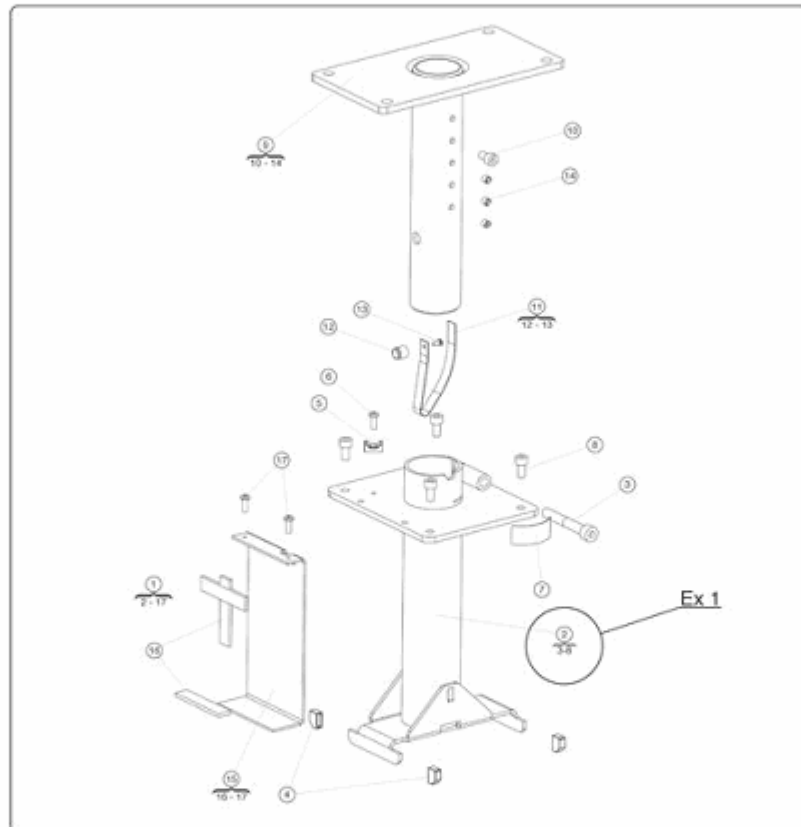
Spare Part Catalog Reservdelskatalog		C300 C300		Seat Tube, Fixed Position Fast sitsrör	
1	2	3	4	5	
Pos no.	Pcs	Part no.	Description	Benämning	Remark/Anm.
1	1	1820446	Seat Tube	Sitsrör fast	
1	1	1820418	Seat Tube for tilt	Sitsrör fast för sitslutning	
2	1		Outer tube	Ytterrör	
3	1		Screw ISO 4762 M8x55 fzb	Skruv ISO 4762 M8x55 fzb	
4	4	1820421	Cap	Hätta	
5	1		Cable Tie Holder 10x15	Buntbandsfäste 10x15	
6	1		Screw ISO 7380 M4x6 fzb	Skruv ISO 7380 M4x6 fzb	
7	1		Nut DIN 985 M4 fzb	Mutter DIN 985 M4 fzb	
8	4		Screw ISO 4762 M6x10 fzb	Skruv ISO 4762 M6x10 fzb	
9	1	1820422	Inner tube	Innerrör	
9	1	1820419	Inner tube for tilt	Innerrör för tilt	
10	1		Screw ISO 4762 M6x10 fzb	Skruv ISO 4762 M6x10 fzb	
11	1		Bracket	Fjäder	
12	1		Stop	Stång	
13	1		Screw ISO 7380 M3x6 fzb	Skruv ISO 7380 M3x6 fzb	
14	1		SLS Bracket	SLS fäste	

Part

A part consists of one or more parts. If a part consists of several parts, a bracket in connection with the part's item bubble is used to show the parts included in the part in the exploded views. See example 1.

Quantity

The quantity specified in front of a part is the total quantity for the entire product.

**Example 1:**

The fixed seat tube, pos 2, includes pos 3 to 8, that are indicated in the bracket below (see above).

Example 2:

If a outer tube, pos 2, is ordered, the quantity is 1. In other words, there is just one outer tube on the chassis. However, if you look at the number of parts included, the quantity may vary. For example, in pos 4, the complete outer tube comprises 4 parts.

Vid beställning av reservdelar skall följande alltid anges:

- Produktmodell (ex.vis elrullstol C300).
- Artikelns benämning.
- använd samma benämning som i denna reservdelskatalog vid beställning.
- Hela artikelnumret.
- Antal.

OBS! I reservdelskatalogen förekommer i vissa fall detaljer utan angivet artikelnr. Det innebär att detaljen inte går att beställa från Remobil, men vi har ändå valt att beskriva dem för din information. Standardkomponenter så som skruv, mutter, bricka och liknande detaljer kan införskaffas i den ordinarie detaljhandeln med hjälp av informationen i denna katalog.

Beskrivning av positionslistor

Positionslistan består av:

A = Visar vilken produkt katalogen beskriver.

B = Visar vilken del av produkten som visas på aktuell sida.

C = Under C finns fem kolumner:

- 1 = Pos.no: Positionsnummer
- 2 = Pcs: Antal detaljer som ingår i aktuellt pos.nummer
- 3 = Part no.: Artikelnummer
- 4 = Benämning: Artikelns benämning (svensk och engelsk benämning)
- 5 = Anmärkning: Plats för ev. tilläggsinformation, förbehåll etc.

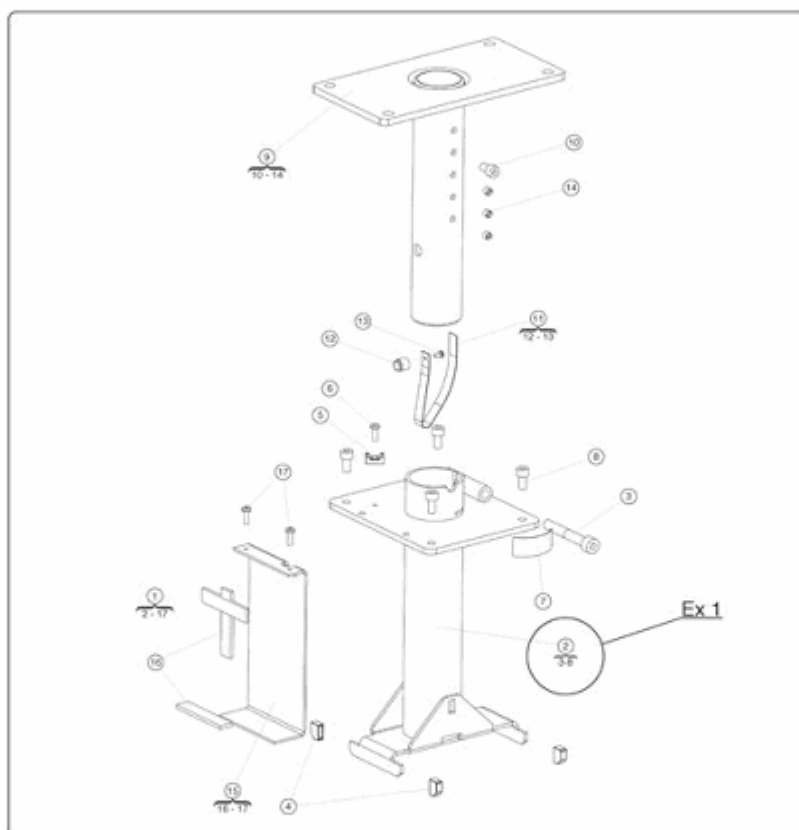
Spare Part Catalog Reservdelskatalog		C300 C300		Seat Tube, Fixed Position Fast sitsrör	
Pos no.	Pcs	Part no.	Description	Benämning	Remark/Anm.
1	1	1820446	Seat Tube	Sitsrör fast	
1	1	1820418	Seat Tube for tilt	Sitsrör fast för sitslutning	
2	1		Outer tube	Ytterrör	
3	1		Screw ISO 4762 M8x55 fzb	Skruv ISO 4762 M8x55 fzb	
4	4	1820421	Cap	Hätta	
5	1		Cable Tie Holder 10x15	Buntbandsfäste 10x15	
6	1		Screw ISO 7380 M4x6 fzb	Skruv ISO 7380 M4x6 fzb	
7	1		Nut DIN 985 M4 fzb	Mutter DIN 985 M4 fzb	
8	4		Screw ISO 4762 M6x10 fzb	Skruv ISO 4762 M6x10 fzb	
9	1	1820422	Inner tube	Innerrör	
9	1	1820419	Inner tube for tilt	Innerrör för tilt	
10	1		Screw ISO 4762 M6x10 fzb	Skruv ISO 4762 M6x10 fzb	
11	1		Bracket	Fjäder	
12	1		Stop	Stång	
13	1		Screw ISO 7380 M3x6 fzb	Skruv ISO 7380 M3x6 fzb	
14	1		SLS Bracket	SLS fäste	

Artikel

En artikel består av en eller flera detaljer. Om en artikel består av flera detaljer är det markerat i sprängskisserna med ett klamer i anslutning till artikelns posbubbla där det står vilka detaljer som ingår i artikeln. se Ex 1.

Antal

Det angivna antalet framför en artikel är det sammanlagda antalet för hela produkten.

**Ex 1:**

I fast sitsrör Pos. 2, ingår poserna 3 till 8 som står i klamret under. (se ovan)

Ex 2:

Beställs ett Ytterrör, pos. 2, så står det att antalet är 1. Det finns med andra ord bara ett ytterrör på chassit. Men om man tittar på antalet i ingående detaljer, så kan antalet variera, i tex. pos 4 är det 4 st för att ytterröret ska vara komplett.

This image shows a full page of white paper with horizontal dashed lines, typical of primary school handwriting practice paper. The lines are evenly spaced and run across the width of the page. There are no margins, text, or other markings on the paper.

[illegible]

[illegible]



PAB no: 1246-1